

## Technical data and air pressure recommendations

Tire size	Operating code				EU tire label				Rim		Tire dimensions					Load capacity (kg) per axle at tire pressure <sup>6)</sup> (bar) (psi)								
	Pattern	LI/SI <sup>1)</sup>	PR	M+S	Speed Index and reference speed (km/h)	TT/TL <sup>2)</sup>	C <sup>3)</sup>	C <sup>4)</sup>	C <sup>5)</sup>	Rim-width	Min. distance between rim centers	Max. standard value in service		Actual value		Stat. radius	Rolling circumference	Tire fitment	L <sup>1)</sup>	7.5 (109)	8.0 (116)	8.5 (123)	9.0 (131)	
												Width	Outer-Ø	Width +1%	Outer-Ø ±1%									±1.5%
385/65 R 22.5	HSC 1 XL	164/-K		M+S	K 110	TL	C	C	73	11.75		405	1092	389	1072	495	3267	164	S					
	HSC 1	160/-K		M+S	K 110	TL	C	C	73	12.25		410		394				160	S	8640	9100	9550	10000	
	HTC 1	160/-K		M+S	K 110	TL	D	C	73															
	HTC 1 ContiRe	160/-K		M+S	K 110	TL	-	-	-															
445/65 R 22.5	HTC 1	169/-K		M+S	K 110	TL	C	C	74	13.00		472	1174	454	1150	524	3485	169	S	10025	10555	11080	11600	
295/80 R 22.5	HSC 1	152/148 K		M+S	K 110	TL	D	C	73	8.25	326	302	1062	290	1044	487	3185	152	S	6420	6760	7100		
	HDC 1	152/148 K		M+S	K 110	TL	D	C	74	9.00	335	310		298				D	11395	12000	12600			
315/80 R 22.5	HSC 1	156/150 K	18	M+S	K 110	TL	D	C	73	9.00	351	318	1096	312	1076	500	3280	156	S	6910	7280	7640	8000	
	HDC 1	156/150 K		M+S	K 110	TL	D	C	74	9.75	360	326		320				D	12120	12765	13400			
	HDC 1 ContiRe	156/150 K		M+S	K 110	TL	-	-	-															
11 R 22.5	HSC 1	148/145 K	16	M+S	K 110	TL	E	C	73	7.50	305	282		271			148	S	5695	6000	6300			
										8.25	314	290	1070	279	1050	489	3200	145	D	10490	11050	11600		
12 R 22.5	HSC 1	152/148 K		M+S	K 110	TL	D	C	73	8.25	329	304	1104	292	1084	504	3306	152	S	6420	6760	7100		
	HDC 1	152/148 K		M+S	K 110	TL	E	C	74	9.00	338	312		300				D	11395	12000	12600			
13 R 22.5	HSC 1	156/150 K		M+S	K 110	TL	D	C	73	9.00	351	318	1146	312	1124	521	3428	156	S	6910	7280	7640	8000	
	HDC 1	156/150 K		M+S	K 110	TL	E	C	74	9.75	360	326		320				D	12120	12765	13400			
325/95 R 24 (12.00 R 24)	HSC 1	162/160 K	20	M+S	K 110	TT	D	C	73	8.50	368	327		320				S	8590	9050	9500			
	HDC 1	162/160 K	20	M+S	K 110	TT	C	C	74	9.00	374	332	1252	325	1228	568	3745	160	D	16280	17145	18000		

Data acc. to DIN 7805/4, WdK-Guidelines 134/2, 142/2, 143/14, 143/25

1) Load index single/dual wheel fitment and speed symbol

2) TT = Tube Type, TL = Tubeless

3) Fuel efficiency

4) Wet grip

5) External rolling noise (db)

6) For tire pressures of 8.0 bar (116 psi) or greater, use valve slit cover plate

6AKH9.en 2015.03

Continental Reifen Deutschland GmbH  
Büttnerstraße 25  
30165 Hannover  
Germany

www.continental-truck-tires.com  
www.continental-corporation.com



**Continental**  
The Future in Motion

**Continental**  
The Future in Motion

Construction



**More load. More volume. More value.**  
The Construction tire line.

### HSC 1 / HDC 1 / HTC 1

Durability, high mileage, long service life - three features that now take you even further. Developed for mixed applications, these tires set new benchmarks in terms of tread pattern, compound and design. All in all, this means increased resistance to the extreme demands made by construction sites, plus enhanced economy of your vehicles.



HSC 1

HDC 1

HTC 1



# HSC 1 / HDC 1 / HTC 1

Extreme challenges call for extreme durability.



## HSC 1 / HDC 1 / HTC 1

By focusing on a specific goal, progress is made by consistently surpassing previous achievements. Here our aim is the same as yours - the ideal tire, both in terms of function and economy. The way to achieve this is via the highly successful Construction+ range, which has undergone further improvements. And here is how we have met the challenge.

### Product highlights

#### The tread area



The toughness of the new on-/off-road compound:

- › means increased resistance to cuts, chipping and chunking
- › reduces the number, and most importantly the depth of any cuts and tears
- › improves protection of the casing by keeping damage superficial
- › results in substantially higher removal mileage, thanks to its great durability

#### The belt layer



The four-ply belt with a reinforced second and third belt ply:

- › withstands highly concentrated pressure
- › prevents fatigue fractures
- › means enhanced traction characteristics through the stiffness of the overall structure
- › protects the casing effectively and offers best retreadability

#### The tread patterns



Greater depth, more volume and an optimized design:

- › result in considerably higher mileage with even wear
- › ensure reliable grip and good handling both on and off the road
- › improve the tire's self-cleaning characteristics and reduce stone-trapping (casing protection)
- › combine high mileage with significant traction and optimum road suitability, whatever the weather conditions

#### The contour



The contour with its steeper sidewalls is dimensionally more stable and:

- › provides greater resistance to deformation caused by radial forces
- › minimizes compression of the sidewalls, even with heavier loads
- › counteracts premature material fatigue
- › means greater load-carrying capacity and improved retreadability

## HSC 1

› A 3- and 4-groove tread pattern for enhanced precision in both on- and off-road applications

## HDC 1

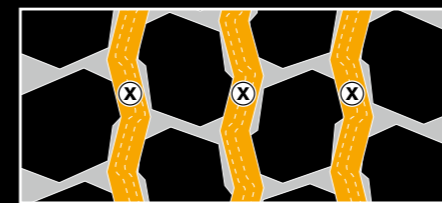
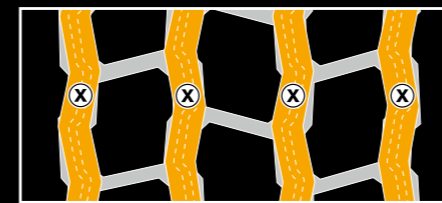
› Advanced tread pattern developed for further improved traction

## HTC 1

› Optimized tire design preserving the value of the casing, reduced stone trapping characteristics

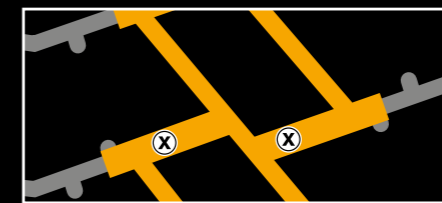
### Regrooving recommendations

#### HSC 1



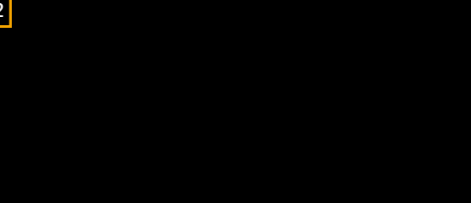
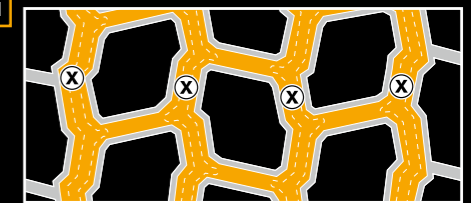
Size	Depth (mm)	Width (mm)
385/65 R 22.5	3.5	12
295/80 R 22.5	3.5	12
315/80 R 22.5	3.0	12
11 R 22.5	3.5	12
12 R 22.5	3.5	12
13 R 22.5	3.5	12

#### HDC 1



Size	Depth (mm)	Width (mm)
315/80 R 22.5 <sup>Z2</sup>	3.5	A:12 B:7
12 R 22.5 <sup>Z1</sup>	3.5	A:12 B:7
13 R 22.5 <sup>Z1</sup>	3.5	A:12 B:7

#### HTC 1



Size	Depth (mm)	Width (mm)
385/65 R 22.5	3.5	A:10 B:7
445/65 R 22.5	3.5	A:10 B:7



"This tire was developed by Continental exactly for our mixed application needs. The new HSC 1 385/65 R 22.5 convinced us with very good handling combined with excellent traction."

**Werner Speer**  
Head of Purchasing  
DFA Transport und Logistik GmbH, Germany