

GENERATION 3. DRIVEN BY YOUR NEEDS.

Technical data and air pressure recommendations

Tire size	Operating code				EU tire label				Rim		Tire dimensions						Load capacity (kg) per axle at tire pressure ⁶⁾ (bar) (psi)					
	Pattern	LI/SI ¹⁾	PR	M+S	Speed Index and reference speed (km/h)	TT/TL ²⁾	3)	4)	5)	Rim-width	Min. distance between rim centers	Max. standard value in service		Actual value		Stat. radius	Rolling circumference	Tire fitment	7.0 (102)	7.5 (109)	8.0 (116)	8.5 (123)
245/70 R 17.5	Conti Hybrid LS3	136/134 M		M+S	M 130	TL	C	B	◊ 69	6.75	270	250	803	240	789	360	2390	136/134 S D	3835	4050	4265	4480
	Conti Hybrid LD3	136/134 M		M+S	M 130	TL	D	C	◊ 74	7.50	279	258		248				134	7260	7670	8075	8480
265/70 R 17.5	Conti Hybrid LS3	139/136 M		M+S	M 130	TL	C	B	◊ 69	6.75	286	264	831	254	817	376	2492	139/136 S D	4365	4615	4860	
	Conti Hybrid LD3	139/136 M		M+S	M 130	TL	D	C	◊ 74	7.50	295	272		262				136	8050	8505	8960	
205/75 R 17.5	Conti Hybrid LS3	124/122 M	12	M+S	M 130	TL	C	B	◊ 69	5.25	222	205	765	197	753	353	2295	124/122 S D	3025	3200		
	Conti Hybrid LD3	124/122 M	12	M+S	M 130	TL	D	C	◊ 74	6.00	231	213		205				124	5675	6000		
215/75 R 17.5	Conti Hybrid LS3	126/124 M	12	M+S	M 130	TL	C	B	◊ 69	6.00	239	220	779	212	767	359	2340	126/124 S D	3400			
	Conti Hybrid LD3	126/124 M	12	M+S	M 130	TL	D	C	◊ 74	6.75	246	228		220				124	6400			
225/75 R 17.5	Conti Hybrid LS3	129/127 M	12	M+S	M 130	TL	C	B	◊ 69	6.00	246	227	797	218	783	366	2390	129/127 S D	3500	3700		
	Conti Hybrid LD3	129/127 M		M+S	M 130	TL	D	C	◊ 74	6.75	254	235		226				127	6620	7000		
235/75 R 17.5	Conti Hybrid LS3	132/130 M	12	M+S	M 130	TL	C	B	◊ 69	6.75	262	242	811	233	797	373	2430	132/130 S D	3590	3795	4000	
	Conti Hybrid LD3	132/130 M	12	M+S	M 130	TL	D	C	◊ 74	7.50	271	250		241				130	6825	7215	7600	

Data acc. to DIN 7805/4, WdK-Guidelines 134/2, 142/2, 143/14, 143/25
 1) Load index single/dual wheel fitment and speed symbol
 2) TT = Tube Type, TL = Tubeless
 3) Fuel efficiency
 4) Wet grip
 5) External rolling noise (db)
 6) For tire pressures of 8.0 bar (116 psi) or greater, use valve slit cover plate



6A89F.en 2015.03
 Continental Reifen Deutschland GmbH
 Büttnerstraße 25
 30165 Hannover
 Germany

www.continental-truck-tires.com
 www.continental-corporation.com



Goods

Redefining regional: Conti Hybrid 17.5

Best choice for
light commercial
vehicles

Conti Hybrid LS3/LD3

- › Excellent mileage performance and fuel efficiency
- › Ideal for mixed applications: regional traffic, motorways and urban road conditions



Conti Hybrid LS3

Conti Hybrid LD3



Conti Hybrid for light commercial vehicles.

A new dimension in regional.

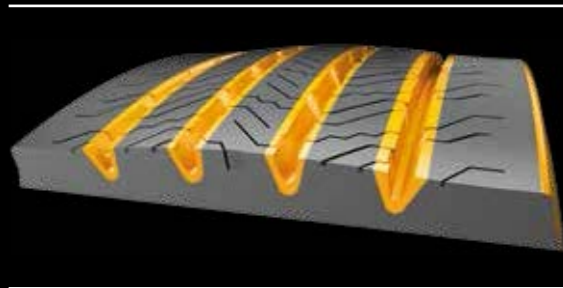
GENERATION 3. DRIVEN BY YOUR NEEDS.



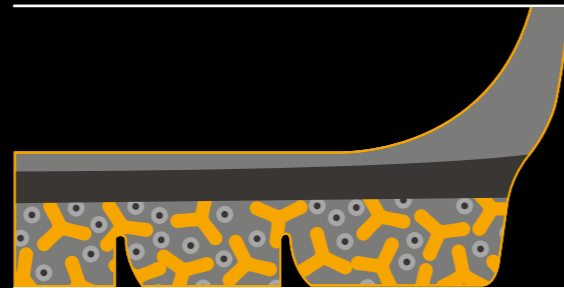
Conti Hybrid LS3 / LD3 17.5"

The ever-increasing demands of today's transport market require a new level of versatility for commercial vehicles. The new Conti Hybrid is the perfect solution. With the highest mileage performance and excellent fuel efficiency, it is equally at home on city streets, motorways and uneven roads. With new technical features that support you in achieving your lowest overall driving costs, the comprehensive, cutting-edge tire line Conti Hybrid is redefining regional.

Product highlights



› Plus Volume Pattern: narrowed groove widths result in increased pattern volume which improves wear resistance to guarantee high mileage performance



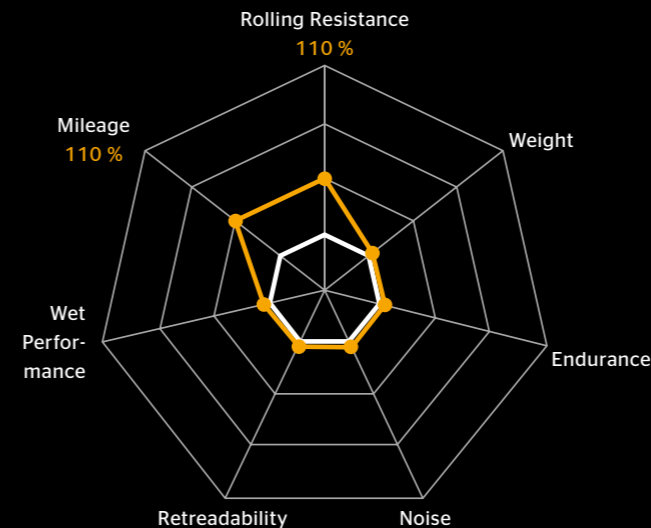
› Two-layer tread construction: combines high mileage performance in the cap compound with significant rolling resistance improvements in the base compound

LifeCycle inbuilt

Continental's premium casing, with Air-Keep inner liner, triangular belt and bead with steel cord chafer, guarantees high retreadability. The Hybrid tire line is perfectly tailored to our ContiLifeCycle.

Conti Hybrid LS3 17.5"

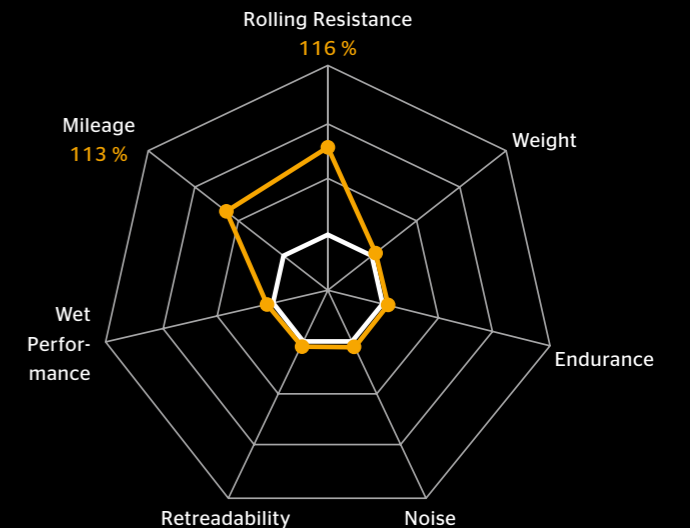
- › 10% improved mileage capabilities compared to predecessor
- › The new siping technology enhances water displacement and improves wet performance
- › M+S marking



— Conti Hybrid LS3
— Compared to predecessor 215/75 R 17.5

Conti Hybrid LD3 17.5"

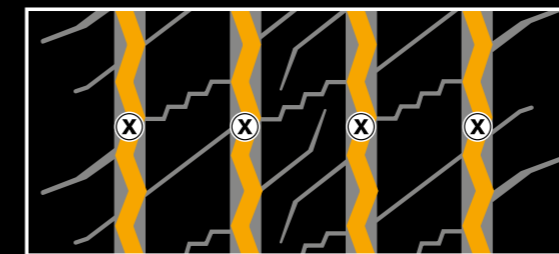
- › 13% improved mileage capabilities compared to predecessor
- › The Chamfered Edge reduces deformation amplitude in sidewall and bead area, resulting in improved rolling resistance, helping to lower fuel consumption
- › Three Peak Mountain Snow Flake (3PMSF) symbol and M+S marking



— Conti Hybrid LD3
— Compared to predecessor 215/75 R 17.5

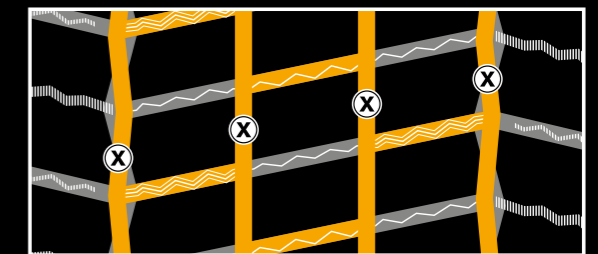
Regrooving recommendations

Conti Hybrid LS3



Size	Depth (mm)	Width (mm)
245/70 R 17.5	2.0	5
265/70 R 17.5	2.5	6
205/75 R 17.5	2.5	5
215/75 R 17.5	2.5	6
225/75 R 17.5	2.5	6
235/75 R 17.5	2.5	6

Conti Hybrid LD3



Size	Depth (mm)	Width (mm)
245/70 R 17.5	2.0	5
265/70 R 17.5	2.5	5
205/75 R 17.5	2.5	5
215/75 R 17.5	2.5	5
225/75 R 17.5	2.5	5
235/75 R 17.5	2.5	5