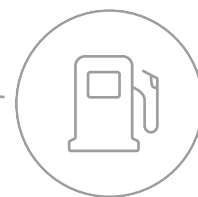




# Save fuel. Lower your costs.

Conti EcoPlus HS3+ | HD3+



The new **Conti EcoPlus Generation 3+** tyre line has been introduced to offer fleets improved **fuel efficiency** when operating in long-haul applications.

With the introduction of a **new tread and sidewall compound**, the new generation saves fuel and CO<sub>2</sub> emissions without compromising on mileage and durability.

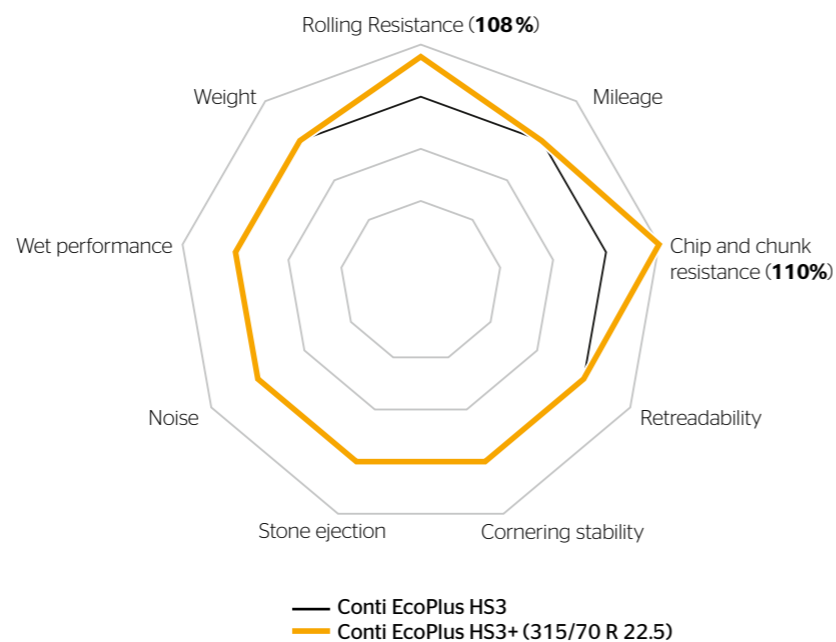


The fuel savers made for motorway use.

# Conti EcoPlus HS3+

## Steer axle tyre

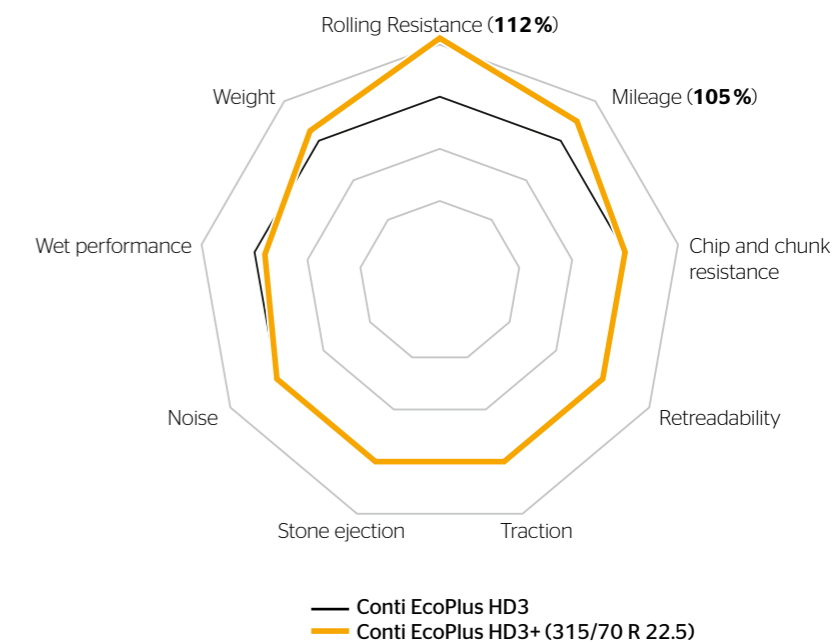
- › **NEW** Greatly improved rolling resistance thanks to a new innovative tread and sidewall compound
- › Optimised base compound for low rolling resistance and excellent fuel efficiency
- › Plus Volume Pattern with smaller groove widths adds tread material and increases wear resistance to achieve high mileage



# Conti EcoPlus HD3+

## Drive axle tyre

- › **NEW** Greatly improved rolling resistance thanks to a new innovative tread and sidewall compound
- › **NEW** Higher mileage performance thanks to new compound
- › The tread design, which features wide blocks, offers an optimised footprint using less deformation energy and improving fuel efficiency



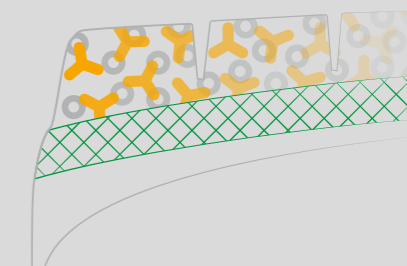
Good things take time:  
The Diamond production process for low rolling resistance

Curing the tyres in a refined, low-temperature production process gives the polymers and carbon particles more time to crosslink effectively. This **Conti Diamond Technique** reduces internal friction within the compound and lowers the rolling resistance, thereby cutting fuel consumption and emissions.



Cutting fuel consumption and emissions:  
Interlocking tread compound for the drive axle

The compound ingredients for the steer and drive axle include an innovative filler material combined with a novel polymer that help interlock more effectively. This **Conti InterLock** technology creates an optimum bond with less friction and lower rolling resistance, which benefits your wallet as well as the environment.



Adjusted outer groove positioning\* for improved tread integrity

Superficial sipes support the full-depth pocket sipes for better water displacement and improved wet performance

Straight, narrow grooves for perfect steering performance and saving fuel

Open shoulders and high number of grip edges for good traction

Wide tread blocks offer an optimised footprint with less deformation

Chamfered Edge technology in the shoulder area for less deformation within the sidewall and bead area resulting in improved rolling resistance





# Your business. Your choice.

We help you choose.



## Conti EcoPlus HS3+

Tire Size	LI/SI				M+S	
315/60 R 22.5 <sup>1)</sup>	154/150 L	C	C	A / 70 dB	•	•
315/70 R 22.5	156/150 L (154/150 M)	B	B	A / 71 dB	•	•
315/80 R 22.5 <sup>1)</sup>	156/150 L (154/150 M)	**	**	**	•	•
385/55 R 22.5 <sup>1)</sup>	160 K (158 L)	B	B	A / 71 dB	•	•
385/65 R 22.5 <sup>2)</sup>	160 K (158 L)	**	**	**	•	•

## Conti EcoPlus HD3+

Tire Size	LI/SI				M+S	
295/55 R 22.5 <sup>1)</sup>	147/145 K	C	C	A / 73 dB	•	•
295/60 R 22.5 <sup>1)</sup>	150/147 L	C	C	A / 73 dB	•	•
315/60 R 22.5 <sup>1)</sup>	152/148 L	B	C	A / 73 dB	•	•
315/70 R 22.5	154/150 L (152/148 M)	B	C	A / 73 dB	•	•
315/80 R 22.5 <sup>1)</sup>	156/150 L (154/150 M)	B	C	A / 73 dB	•	•



<sup>1)</sup> available from Q3 / 2021

<sup>2)</sup> available from Q2 / 2022

\*\* values in preparation

**Get ready for tomorrow by making the right choices today**

The EU has introduced new CO<sub>2</sub> emissions regulations for truck manufacturers. While these don't currently apply to fleet operators, additional emissions regulations are expected before long. Learn more:

[www.conti-truck-tires.com/vecto](http://www.conti-truck-tires.com/vecto)