

# ContiEarth™ Continental EM-Master E3/L3

- › Engineered for earthmoving machines like  
Articulated Dump Trucks and Loaders



## Application

ADTs and loaders are used for transporting large quantities of bulk or aggregate material in applications like quarries; construction or mining sites. The E3/L3 version of our EM-Master series was primarily designed for conditions that range from soft to muddy terrain. Self-cleaning, traction and a smooth ride were main criterias for the pattern development.

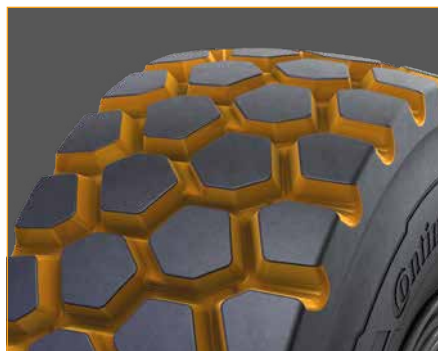
Our EM-Master is customised for these specific demands and comes with a cut resistant tread compound to master the application

## Features



### Tread blocks with multiple gripping edges

For powerful traction on  
soft and muddy terrain



### Wide space between blocks

For outstanding self-cleaning  
abilities & for low heat build-up



### Connexion between center blocks

For improvement of traction  
capabilities & for smooth running

### Ready for ContiPressureCheck™

All our radial earthmover tyres are equipped with premounted sensors which constantly monitor inflation pressure and temperature of the tyre and can transmit the information in real time to the ContiPressureCheck™ system.

For more information please check out [www.continental-tyres.co.uk/specialty/solutions](http://www.continental-tyres.co.uk/specialty/solutions)



### EM-Master E3/L3

Article no.	Tyre size	TRA code	Type	Transport		Loader		Rim	Overall diam. mm (inch)	Overall width mm (inch)	Tread depth mm (32")
				SR / PR	LI/SS	SR / PR	LI/SS				
1270510	20.5R25	E3/L3	TL	2*	177B	1*	186A2	25x17.00/2.0 & 1.7	1485 (58.5)	512 (20.2)	37 (46/32)
1270509	23.5R25	E3/L3	TL	2*	185B	1*	195A2	25x19.50/2.5	1615 (63.6)	605 (23.8)	39 (49/32)
1270507	26.5R25	E3/L3	TL	2*	193B	2*	202A2	25x22.00/3.0	1740 (68.5)	703 (27.7)	41 (52/32)
1270505	29.5R25	E3/L3	TL	2*	200B	2*	216A2	25x25.00/3.5	1843 (72.6)	759 (29.9)	46 (58/32)

SR: Star Rating for radial tyres

PR: Ply Rating for x-ply tyres

LI: Load Index

SS: Speed Symbol

All EM-Master tyres feature a cut resistant tread compound

Specifications are subject to change without notice

For further technical information, see data sheets

For details regarding product availability, please contact your local sales representative.