

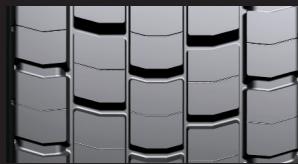
# HDR Series



⊙ Recommended axle   ⊙ Optional axle



- ⊙ Advanced tread design for outstanding mileage and superior traction.
- ⊙ Specialized wear resistant drive axle compound providing high mileage and grip.
- ⊙ Numerous grip edges and open shoulder tread pattern delivering excellent traction and even tread wear.
- ⊙ New belt package improves stiffness of crown area. Even wear and higher mileage are the result.
- ⊙ High-value casing provides the best basis for premium retreadability.



## Recommended Applications:

- ⊙ Motorway and Regional application
- ⊙ Container
- ⊙ General Cargo
- ⊙ Tanker

## Technical Data

Article Number	Tyre Sizes	Tread Pattern	Load Speed Index <sup>1)</sup>	Ply Rating	TT / TL <sup>2)</sup>	Speed Index & refspeed (km/h)	Tread Depth (mm)	Tyre Dimensions		Recommended Rim (inches)	Min Dual Spacing (mm)	Buffing Radius (mm)	Recommended Tread Liner Width (mm)	Maximum Load @ Inflation			
								Design Value						Single		Dual	
								Outer ø (mm) ± 1%	Width (mm) + 1%					KG	PSI (BAR)	KG	PSI (BAR)
05221230000	10.00R 20	HDR2	146/143K	16	TT	K110	17.7	1052	275	7.50	316	700	235	6000	120 (8.3)	10900	120 (8.3)
05222610000	10.00R 20	HDR2 α	146/143K	16	TT	K110	17.7	1052	275	7.50	316	700	235	6000	116 (8)	10900	116 (8)
05221840000	295/80R 22.5	HDR2+	152/148M	16	TL	M130	21.5	1044	290	8.25	326	900	250	7100	123 (8.5)	12600	123 (8.5)
05221950000	315/80R 22.5	HDR2+	156/150L	20	TL	L120	22.0	1076	312	9.00	351	800	260	7640	131 (9.0)	13400	123 (8.5)
05221090000	11R 22.5	HDR2+	148/145L	16	TL	L120	20.2	1050	279	8.25	314	700	225	6300	123 (8.5)	11600	123 (8.5)

Technical data: "No Liability Assumed" Data acc. to DIN 7805/4, Wdk-Guideline 134/2, 142/2, 143/14, 143/25  
 1) Load Index single/twin tyres fitment and Speed Symbol   2) TT = Tube Type, TL = Tubeless