

# Conti Hybrid HD3

GENERATION 3. DRIVEN BY YOUR NEEDS



**Continental** Generation 3

**EXCELLENT**



Mileage

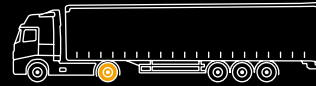


Retreadability



Fuel Efficiency

# Conti Hybrid HD3



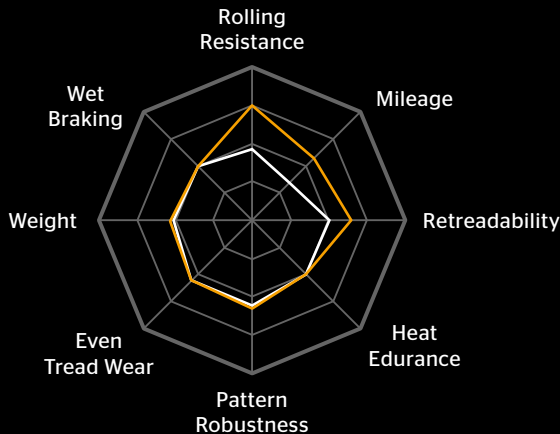
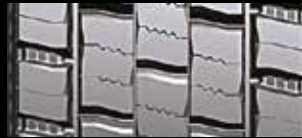
⦿ Recommended axle



## Excellent

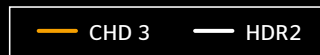
- Mileage
- Retreadability
- Fuel Efficiency

- ⦿ New tread pattern and base compound has generously improved rolling resistance and mileage.
- ⦿ Sidewall robustness is superior with 25% more steel in the carcass.
- ⦿ Tread pattern design is optimised with stone ejection technology.
- ⦿ High durability casing provides the best basis for premium retreadability.



### Recommended Applications:

- ⦿ Container
- ⦿ General Cargo
- ⦿ Tanker



### Technical Data

Article Number	Tyre Sizes	Tread Pattern	Load Speed Index <sup>1)</sup>	Ply Rating	TT / TL <sup>2)</sup>	Speed Index & ret. speed (km/h)	Tread Depth	Overall Inflated Diameter (mm)	Overall Inflated Width (mm)	Recommended Rim (inches)	Min Dual Spacing (mm)	Buffing Radius (mm)	Recommended Tread Liner Width (mm)	Maximum Load @ Inflation <sup>3)</sup>			
														Single	Dual	Single	Dual
522202000	295/80R22.5	Conti Hybrid HD3	152/148M		TL	130	21	1068	300	8.25	326	800	280	7100	125 (8.5)	12600	125 (8.5)

Technical data : "No Liability Assumed" Data acc. to DIN 7805/4, Wdk-Guideline 134/2, 142/2, 143/14, 143/25  
 1) Load Index single/twin tyres fitment and Speed Symbol 2) TT = Tube Type, TL = Tubeless 3) For tyres pressures of 8.0 bar and over, use valve slit cover plates

We are offering a premium retread solution for our high-value casings



Continental Tyre PJ Malaysia Sdn. Bhd. (4296 K)  
 3rd Floor, 2 Jalan Tandang, 46050 Petaling Jaya, Selangor, Malaysia.

[www.continental-tyres.com.my/transport](http://www.continental-tyres.com.my/transport)