

Conti HSC 3

Intelligent Construction Steer/All-Position

Applications: Coal haulers, logging, construction and other all-position service.





Legend:

3G Casing	SmartWay Verified	Intelligent Tire	Retread Available
-----------	-------------------	------------------	-------------------

PRODUCT FEATURES ABOVE ONLY APPLY TO PRODUCTS IF THE MATCHING ICON IS DARKENED.

Conti HSC 3

Intelligent Construction Steer/All-Position

GOODS PEOPLE CONSTRUCTION



PRODUCT DATA



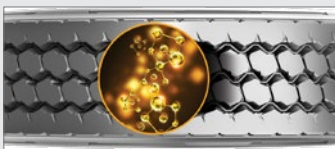
TIRE SIZE	LOAD RANGE	ARTICLE NUMBER	TREAD DEPTH (32nds)	MAX SPEED (MPH)	STATIC LOADED RADIUS		OVERALL INFLATED DIAMETER		OVERALL INFLATED WIDTH		LOADED SECTION WIDTH		APPROVED RIM(S)	MINIMUM DUAL SPACING		REVS PER UNIT		TIRE WEIGHT		MAX. LOAD @ INFLATION	
					IN	MM	IN	MM	IN	MM	IN	MM		IN	MM	MI	KM	LB	KG	LB, PSI (KG, KPa)	LB, PSI (KG, KPa)
11R22.5	H	05652440000	24	68	196	498	41.7	1060	11.7	297	12.7	322	8.25, 7.50	12.5	318	496	308	135	61	6610, 120 (3000, 830)	6005, 120 (2725, 830)
12R22.5	H	05652460000	24	68	201	512	42.9	1090	11.8	301	13.0	329	9.00, 8.25	13.5	343	482	300	150	68	7390, 120 (3350, 830)	6780, 120 (3075, 830)
315/80R22.5	L	05652480000	24	68	19.8	502	42.9	1089	12.5	318	13.8	351	9.00, 8.25	13.8	351	483	300	162	74	10200, 130 (4625, 900)	9090, 130 (4125, 900)
11R24.5	H	05652450000	24	68	20.6	523	43.9	1115	11.7	297	12.7	322	8.25, 7.50	12.5	318	472	293	144	65	7160, 120 (3250, 830)	6610, 120 (3000, 830)
12R24.5	H	05652470000	24	68	21.1	537	44.9	1141	12.0	305	14.5	368	9.00, 8.25	13.7	348	461	286	163	74	7830, 120 (3550, 830)	7160, 120 (3250, 830)

TUBELESS TIRES ON 15 DEGREE DROP CENTER RIMS

Note - Rim listed first is the measuring rim. Minimum Dual Spacing calculated without chains. * - ECE Certified. # - Exceeding the lawful speed limit is neither recommended nor endorsed. Overall widths will change 0.1 inch (2.5 mm) for each 1/4 inch change in rim width. 315/80R22.5 tires used on 8.25" rims are restricted to a maximum of 7160 lbs at 120 psi. Minimum dual spacing should be adjusted accordingly. Continental Tire the Americas, LLC reserves the right to change product specifications at any time without notice or obligations. Please consult rim manufacturers load and inflation limits. Never exceed rim manufacturers limits without permission of component manufacturer.

Features & Benefits

Applications: Construction, coal haulers, logging and other all-position service.



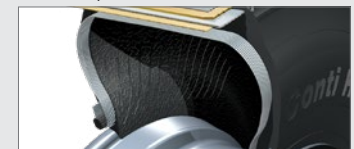
Aggressive on/off-road tread design with enhanced cap/base compounds for **improved mileage and traction**.



Built on the innovative Conti 3G Casing with **premium off-road belt package** for maximum retreadability and increased casing life.



Self-cleaning tread design and groove geometry reduces stone retention for enhanced retreadability.



Maximum sidewall protection for improved resistance against curbing, cuts and abrasions.

sensor CONNECT | Continental's Intelligent Tire



Equipped with TPMS Sensor for accurate, real-time tire pressure and temperature readings • Sensor warranted for 5 Years to minimize disruptions. • Sensor provides true casing temperature allowing preventive actions that make your tire last longer • Avoids valve damage and air leaks by mounting on the inner liner.

Learn more at www.continental-truck.com to learn more. See warranty policy for details.

