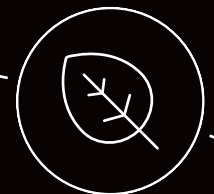




## Where fuel efficiency meets powerful performance.

The new Conti EcoRegional – designed to cut fuel consumption and CO<sub>2</sub> emissions.

- › Minimum rolling resistance thanks to new compound formula and a special production process, bringing sustainable savings in fuel and CO<sub>2</sub> emissions
- › Maximum grip and top handling performance in all weathers due to robust tread pattern designed for regional roads
- › High mileage thanks to balanced compound formula
- › Refined pattern structure for even wear



The fuel saver for mixed regional and long-haul operations.

# Say yes to cutting fuel costs and CO<sub>2</sub> emissions.

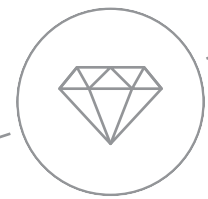
Transporting goods on regional and long-haul routes? With a daily diet of countless delivery stops, heavy traffic, and winding, poorly maintained roads? Then the least we can do is make it easy for you to cut fuel costs and emissions. That's why we've developed the new **Conti EcoRegional**. With a tread design just made for regional operations, this tire delivers the same power-packed performance as the renowned Conti Hybrid. And with a special production process and a new compound formula generating low rolling resistance, it will cut your fuel consumption and your total carbon footprint.

## Conti EcoRegional HS3 Steering in the right direction

Good things take time: The Diamond production process for low rolling resistance

Producing a really good tire is like cooking a really good meal. You need three things to hit the spot: a good recipe, high quality ingredients, and all the time it takes for them to cook. That's why, to lower the rolling resistance of the **Conti EcoRegional HS3**, we used the **Conti Diamond Technique** – a refined production process for truck tires. In line with the motto 'good things take time' – which applies to the long time of diamond formation – it implies that Conti EcoRegional steer tires are cured at relatively low temperatures, which means it takes longer. In combination with

a special compound formula, also used in the Conti Hybrid HS3, this gives the different ingredients such as polymers and carbon particles time to react with one another and cross-link more effectively. The result is less internal friction within the compound when the truck is out on the road. So there is less build-up of heat and the rolling resistance is reduced. Down goes the fuel consumption and the emissions.



Everything you need for a powerful performance on regional roads:  
The steer axle tread design



Enhanced surface styling for great wet grip, even wear and high mileage



Full-depth pocket sipes at 50% of rib width minimize uneven wear and enhance water displacement for improved performance in the wet



New W-groove technology enables even distribution of forces along the groove when cornering, reducing stress on the tire and extending service life\*

\* available in 315/70 R 22.5 & 385/55 R 22.5

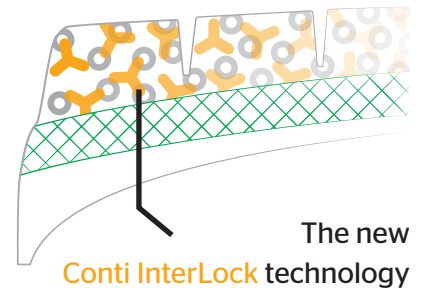
# Conti EcoRegional HD3

## Driving the future

Cutting fuel consumption and emissions has never been so easy:  
The game-changing tread compound for the drive axle

To improve fuel efficiency and reduce CO<sub>2</sub> emissions we have developed an innovative compound for the **new Conti EcoRegional HD3** which delivers a previously unattained balance between the tire's mileage and its rolling resistance on regional roads. We used an innovative filler material which ensures optimum interaction with the polymers in the rubber compound and enables them to bind more firmly to these fillers. But the compound also contains

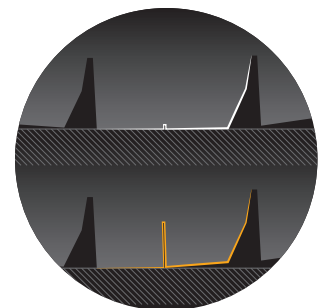
a novel polymer which has better binding properties that help it interlock more effectively with the filler elements. The result is an optimum bond between the compound ingredients, so that less internal friction occurs. This translates into lower rolling resistance. And at the end of the day, this benefits not only your wallet but the environment as well.



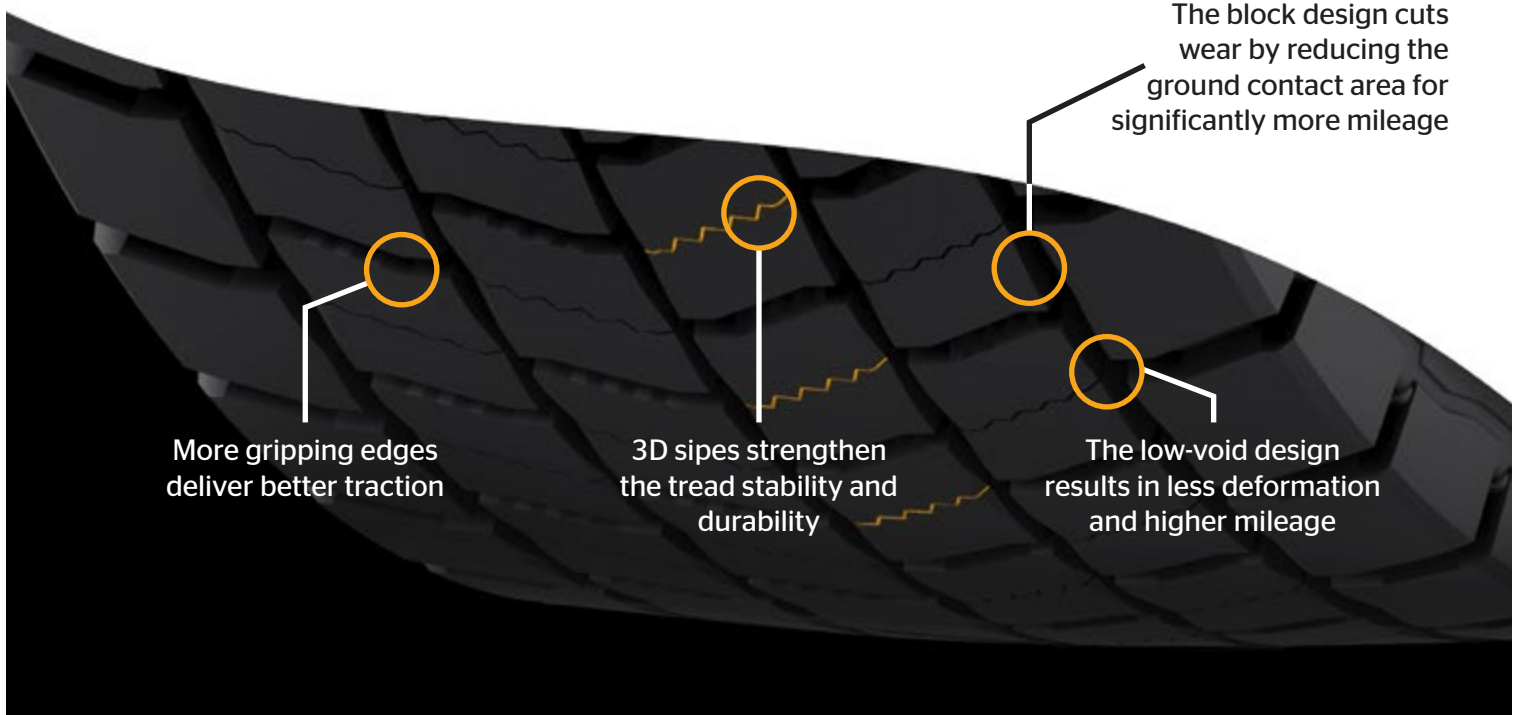
Never change a running system: The renowned tread design made for regional roads

Regional roads call for outstanding handling, grip and mileage from your tires. That's why when we developed the Conti EcoRegional HD3 we adopted the tread pattern of the renowned Conti Hybrid HD3 to give you top performance on hilly,

winding roads. That said, with its new compound formula optimized for rolling resistance, the tread is the same but different. Maintaining performance while reducing fuel consumption and CO<sub>2</sub> emissions just got easier.



The block design cuts wear by reducing the ground contact area for significantly more mileage



More gripping edges deliver better traction

3D sipes strengthen the tread stability and durability

The low-void design results in less deformation and higher mileage



# Your business. Your choice.

We help you choose.



## Conti EcoRegional HS3

Tire Size	LI/SI	M+S					
315/70 R 22.5	156/150 L (154/150 M)	•	•	C	B	◀	70 dB •
315/80 R 22.5	156/150 L (154/150 M)	•	•	C	B	◀	70 dB •
295/80 R 22.5*	154/149 M	•	•	C	B	◀	70 dB •
385/55 R 22.5	160 K (158 L)	•	•	C	B	◀	71 dB •
385/65 R 22.5	164 K	•	•	C	B	◀	71 dB •



## Conti EcoRegional HD3

Tire Size	LI/SI	M+S					
315/70 R 22.5	154/150 L (152/148 M)	•	•	C	C	◀	73 dB •
315/80 R 22.5	156/150 L (154/150 M)	•	•	C	C	◀	73 dB •
295/80 R 22.5*	152/148 M	•	•	C	C	◀	73 dB •

\* Available in Q4 2020

Also available as intelligent tires, already fitted with tire sensors ex works

[www.continental-tires.com/transport](http://www.continental-tires.com/transport)

**Get ready for tomorrow by making the right choices today**

The EU has introduced new CO<sub>2</sub> emissions regulations for truck manufacturers. While these don't currently apply to fleet operators, additional emissions regulations are expected before long. Learn more:

[www.conti-truck-tires.com/vecto](http://www.conti-truck-tires.com/vecto)