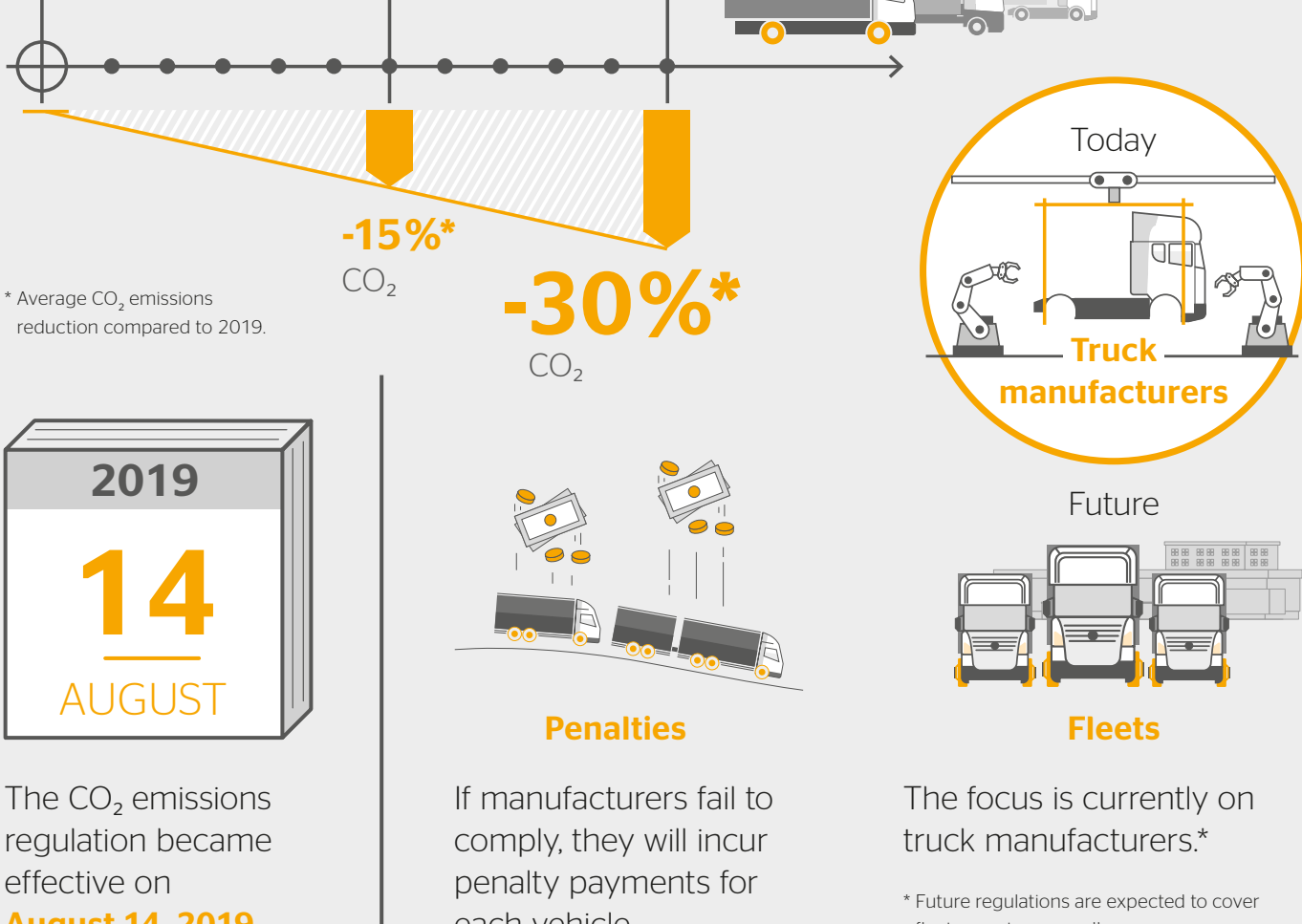


# VECTO & THE NEW HEAVY-DUTY VEHICLES CO<sub>2</sub> EMISSIONS REGULATION

## What is new?

The EU has introduced new regulations for truck manufacturers.

These will mean cutting average CO<sub>2</sub> emissions from new heavy-duty vehicles by 15% by 2025 and by 30% by 2030.



**2019**  
**14**  
**AUGUST**

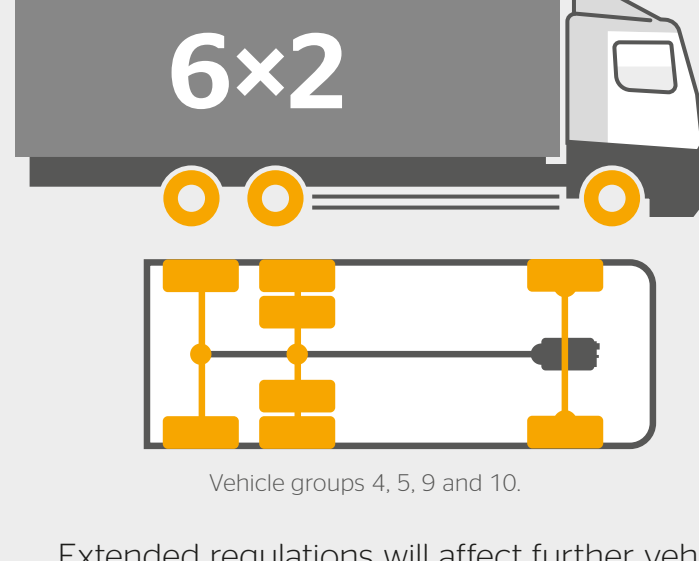
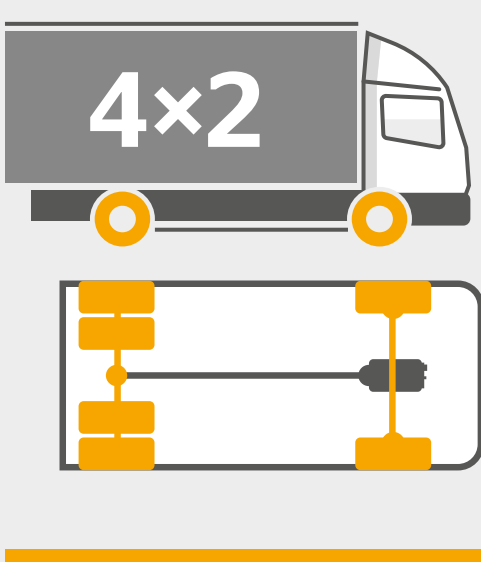
The CO<sub>2</sub> emissions regulation became effective on **August 14, 2019.**

**Penalties**

If manufacturers fail to comply, they will incur penalty payments for each vehicle.

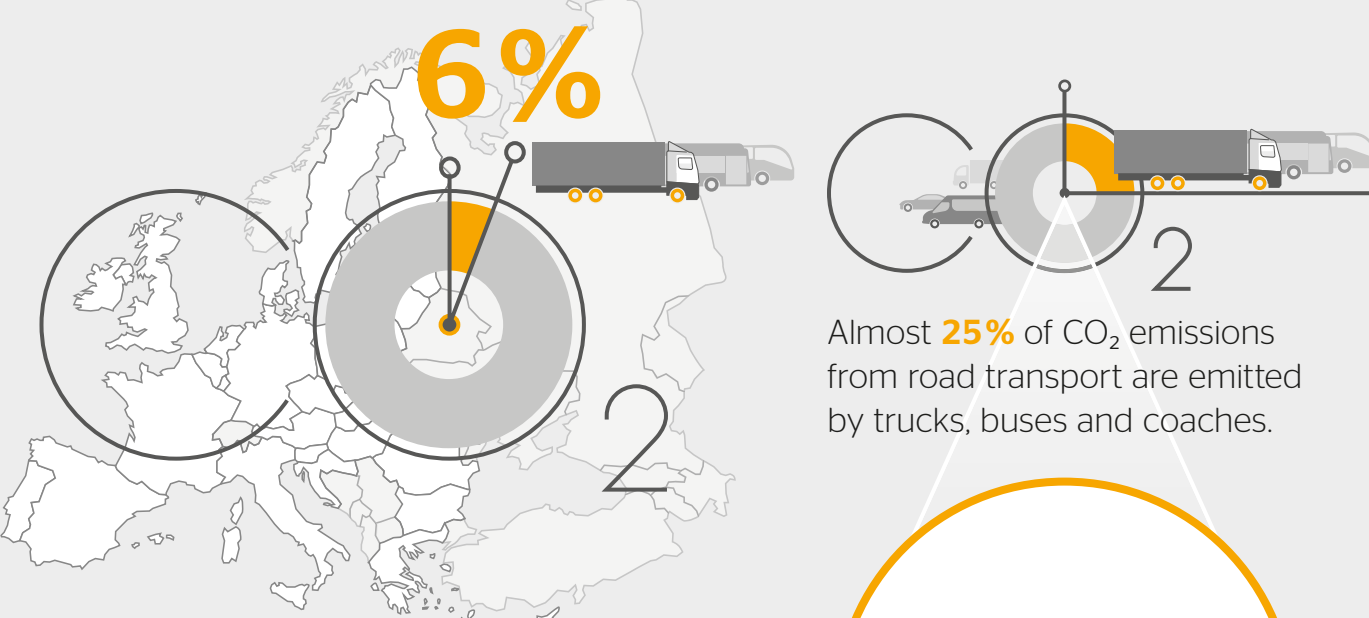
## Which vehicles are affected?

Large trucks (rigid and tractor) with a 4x2 and 6x2 axle configuration and a max. GVW > 16t.



Extended regulations will affect further vehicle configurations and trailers in the future.

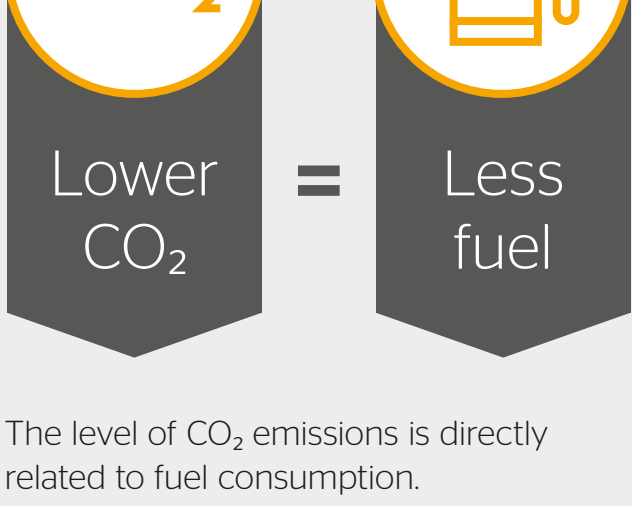
## Why is this so important?



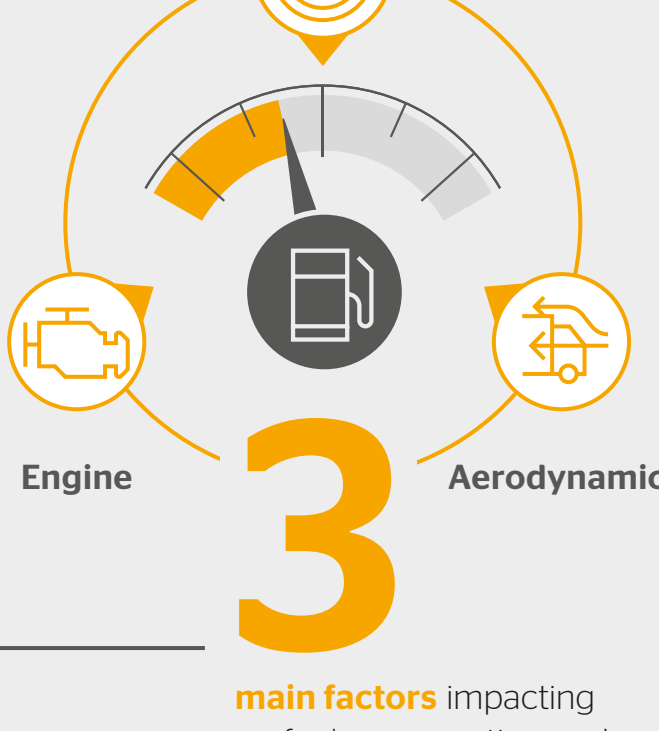
CO<sub>2</sub> emissions will keep rising dramatically as volumes of road freight continue to increase.



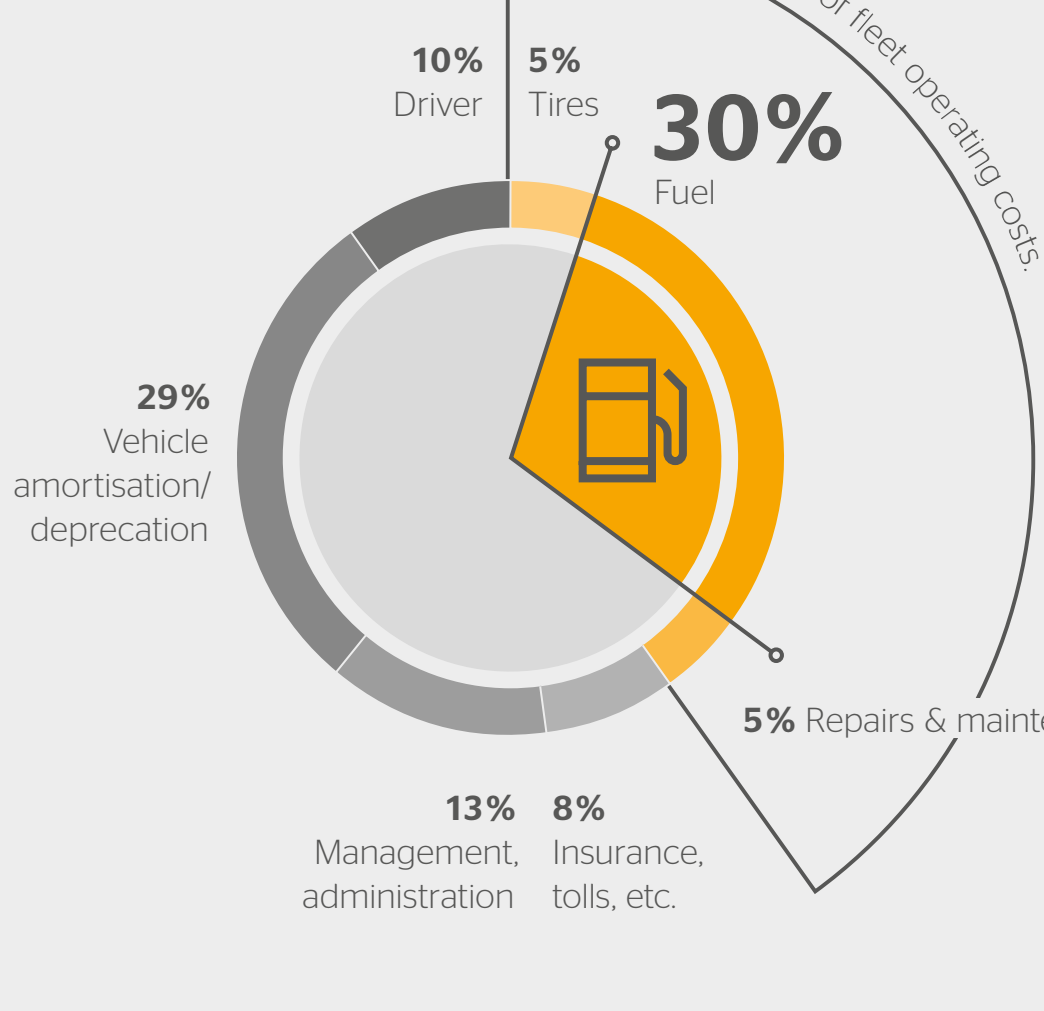
## CO<sub>2</sub> emissions & fuel consumption



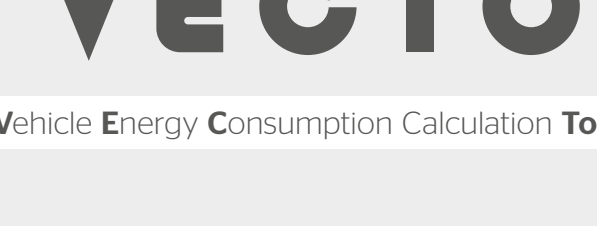
The level of CO<sub>2</sub> emissions is directly related to fuel consumption.



## Fleet operating costs



## What is VECTO?

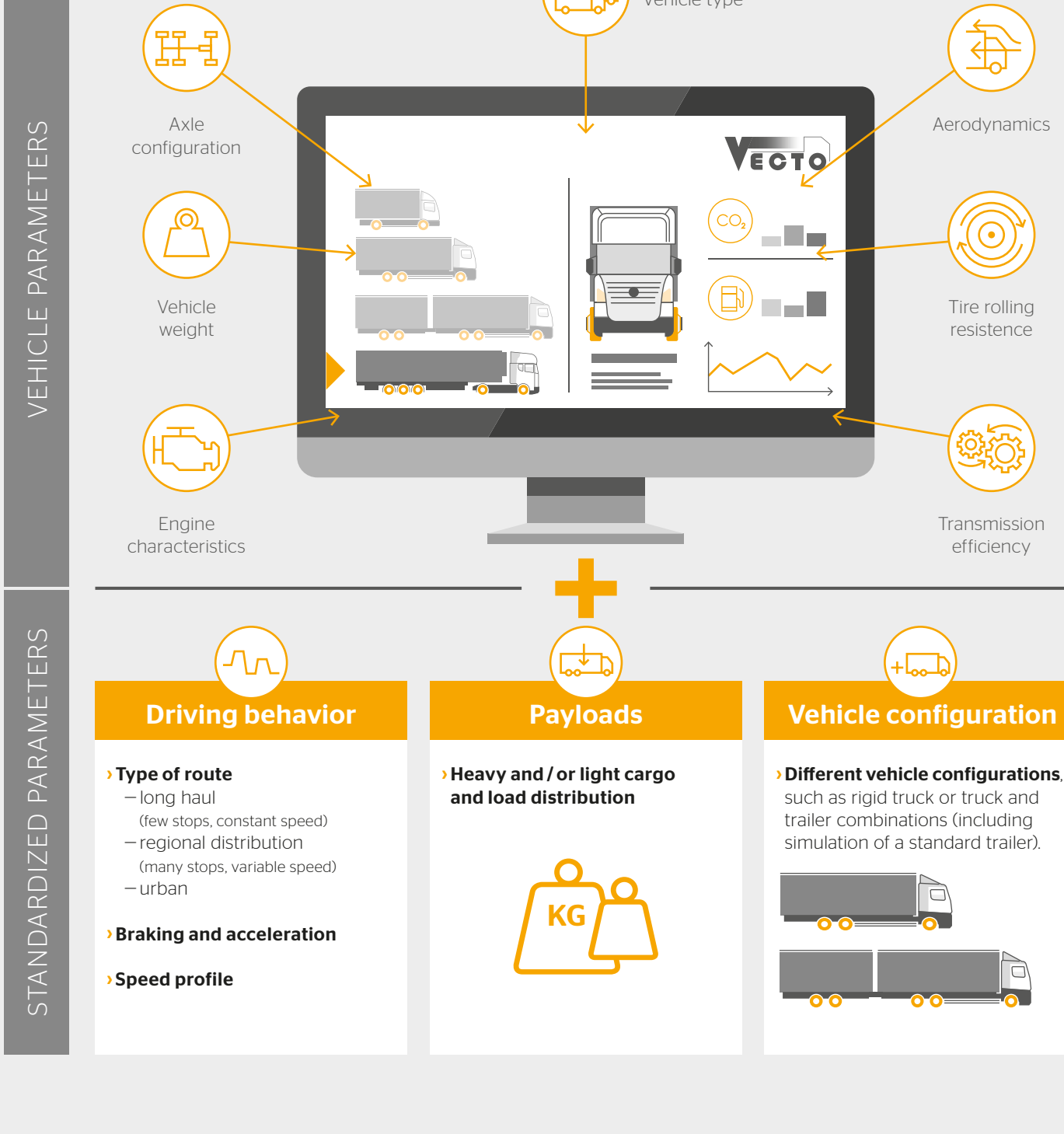


Vehicle Energy Consumption Calculation Tool

VECTO is a mandatory, digital simulation tool that has been developed by the EU to ensure that the CO<sub>2</sub> emissions reduction targets are met.

With VECTO, vehicle manufacturers can simulate the CO<sub>2</sub> emissions and fuel consumption of individual vehicle configurations.

As inputs, the tool uses a number of parameters:



## Fleet operators will benefit from:

- ✓ Easy comparison of different vehicles
- ✓ Greater transparency on fuel consumption and CO<sub>2</sub> emissions of different vehicle configurations when purchasing new trucks
- ✓ Positive impact on the fuel efficiency of the entire fleet

THE RIGHT TIRE FOR YOUR BUSINESS? WE HELP YOU CHOOSE.