

Conti HSC 3 Construction Steer/All-Position

Applications: Coal haulers, logging, construction and other all-position service.



Legend:

3G Casing	SmartWay Verified	With TPMS Sensor	Retread Available
-----------	-------------------	------------------	-------------------

Conti HSC 3

Construction Steer/All-Position

GOODS PEOPLE CONSTRUCTION



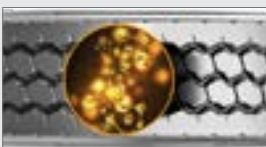
PRODUCT DATA



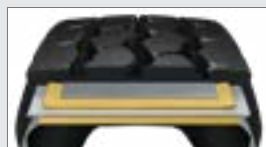
TIRE SIZE	LOAD RANGE	ARTICLE NUMBER	TREAD DEPTH (32nds)	MAX SPEED (MPH)	STATIC LOADED RADIUS		OVERALL INFLATED DIAMETER		OVERALL INFLATED WIDTH		LOADED SECTION WIDTH		APPROVED RIM(S)	MINIMUM DUAL SPACING		REVS PER UNIT		TIRE WEIGHT		MAX. LOAD @ INFLATION	
					IN	MM	IN	MM	IN	MM	IN	MM		IN	MM	MI	KM	LB	KG	LB, PSI	LB, PSI
					SINGLE		DUAL														
11R22.5	H	05652440000	24	68	196	498	41.7	1060	11.7	297	12.7	322	8.25, 7.50	12.5	318	496	308	137	62	6610, 120 (3000, 830)	6005, 120 (2725, 830)
11R24.5	H	05652450000	24	68	206	523	43.9	1115	11.7	297	12.7	322	8.25, 7.50	12.5	318	472	293	142	64	7160, 120 (3250, 830)	6610, 120 (3000, 830)

TUBELESS TIRES ON 15 DEGREE DROP CENTER RIMS

Note - Rim listed first is the measuring rim. Minimum Dual Spacing calculated without chains. * - ECE Certified # - Exceeding the lawful speed limit is neither recommended nor endorsed. Overall widths will change 01 inch (2.5 mm) for each 1/4 inch change in rim width. Minimum dual spacing should be adjusted accordingly. Continental Tire the Americas, LLC reserves the right to change product specifications at any time without notice or obligations. Please consult rim manufacturers load and inflation limits. Never exceed rim manufacturers limits without permission of component manufacturer.



Aggressive on-off road tread design with enhanced cap/base compounds for **improved mileage and traction.**



Built on the innovative Conti 3G Casing with **premium off-road belt package** for maximum retreadability and increased casing life.



Self-cleaning tread design and groove geometry reduces stone retention for enhanced retreadability.



Maximum sidewall protection for improved resistance against curbing, cuts and abrasions.



Embedded with **TPMS Active Sensor** Technology.

Intelligent Tire | Equipped with TPMS Sensor

- **Accurate, real-time** tire pressure and temperature readings
- **Sensor lasts 6 years / 400,000 miles** to minimize disruptions
- **Sensor provides true casing temperature** allowing preventive actions that make your tire last longer
- **Avoids valve damage and air leaks** by mounting on the inner liner



To get connected with one of our Digital Tire Monitoring Solutions, visit www.continental-truck.com.

Applications: Coal haulers, logging, construction and other all-position service.