

Conti HAC 3 Construction All-Position

Applications: Wide base, all-position fitment for on/off, mixed service applications.



Legend:

3G Casing	SmartWay Verified	With TPMS Sensor	Retread Available
-----------	-------------------	------------------	-------------------

Conti HAC 3

Construction All-Position

GOODS PEOPLE CONSTRUCTION



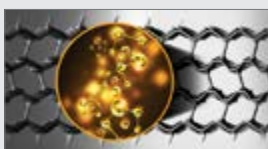
PRODUCT DATA



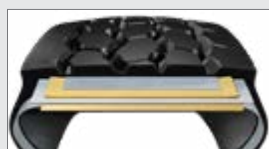
TIRE SIZE	LOAD RANGE	ARTICLE NUMBER	TREAD DEPTH (32nds)	MAX SPEED (MPH)	STATIC LOADED RADIUS		OVERALL INFLATED DIAMETER		OVERALL INFLATED WIDTH		LOADED SECTION WIDTH		APPROVED RIM(S)	MINIMUM DUAL SPACING		REVS PER UNIT		TIRE WEIGHT		MAX. LOAD @ INFLATION			
					IN	MM	IN	MM	IN	MM	IN	MM		IN	MM	IN	MM	MI	KM	LB	KG	LBS, PSI (KG, KPa)	LBS, PSI (KG, KPa)
385/65R22.5	L	05652000000	22	68	196	498	42.0	1067	14.8	376	15.9	404	11.75, 12.25	N/A	N/A	480	298	169	77	9920, 130 (4500, 900)	N/A		
425/65R22.5	L	05652010000	24	68	208	529	44.8	1138	16.6	421	17.9	454	13.00, 12.25, 14.00	N/A	N/A	493	306	185	84	11400, 120 (5150, 830)	N/A		

TUBELESS TIRES ON 15 DEGREE DROP CENTER RIMS

Note - Rim listed first is the measuring rim. * - ECE Certified # - Exceeding the lawful speed limit is neither recommended nor endorsed. Overall widths will change 0.1 inch (2.5 mm) for each 1/4 inch change in rim width. Minimum dual spacing should be adjusted accordingly. Continental Tire the Americas, LLC reserves the right to change product specifications at any time without notice or obligations. Please consult rim manufacturers load and inflation limits. Never exceed rim manufacturers limits without permission of component manufacturer.



Aggressive on/off-road tread design combined with enhanced cap/base compounds for **improved mileage and traction.**



Rugged 4-belt tread package resists impacts, bruises and penetrations for improved casing durability.



Minimal stone retention due to **self-cleaning tread pattern** and groove geometry for enhanced retreadability.



Increased sidewall gauge for improved resistance against curbing, cuts and abrasions.



Embedded with **TPMS Active Sensor** Technology.

Intelligent Tire | Equipped with TPMS Sensor

- **Accurate, real-time** tire pressure and temperature readings
- **Sensor lasts 6 years / 400,000 miles** to minimize disruptions
- **Sensor provides true casing temperature** allowing preventive actions that make your tire last longer
- **Avoids valve damage and air leaks** by mounting on the inner liner



To get connected with one of our Digital Tire Monitoring Solutions, visit www.continental-truck.com.

Applications: Wide base, all-position fitment for on/off-road, mixed service applications such as cement mixers.