

HSC1

Construction All-Position

Applications: Coal haulers, logging, construction and other all-position service.



Legend:

3G Casing	SmartWay Verified	With TPMS Sensor	Retread Available
-----------	-------------------	------------------	-------------------

HSC1

Construction All-Position

GOODS PEOPLE CONSTRUCTION



PRODUCT DATA



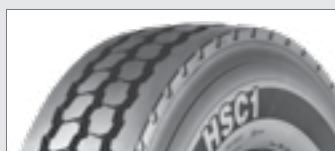
TIRE SIZE	LOAD RANGE	ARTICLE NUMBER	TREAD DEPTH (32nds)	MAX SPEED (MPH)	STATIC LOADED RADIUS		OVERALL INFLATED DIAMETER		OVERALL INFLATED WIDTH		LOADED SECTION WIDTH		APPROVED RIM(S)	MINIMUM DUAL SPACING		REVS PER UNIT		TIRE WEIGHT		MAX. LOAD @ INFLATION	
					IN	MM	IN	MM	IN	MM	IN	MM		IN	MM	MI	KM	LB	KG	SINGLE	DUAL
					LBS, PSI (KG, KPa)		LBS, PSI (KG, KPa)		LBS, PSI (KG, KPa)		LBS, PSI (KG, KPa)			LBS, PSI (KG, KPa)		LBS, PSI (KG, KPa)		LBS, PSI (KG, KPa)		LBS, PSI (KG, KPa)	
11R22.5*	H	05686530000	24	68	19.6	499	41.7	1059	11.2	284	12.2	310	8.25, 7.50	12.5	318	496	308	131	59	6610, 120 (3000, 830)	6005, 120 (2725, 830)
12R22.5	H	05686550000	24	68	20.2	512	43.0	1092	11.4	290	12.1	306	9.00, 8.25	13.5	343	482	299	138	63	7390, 120 (3350, 830)	6780, 120 (3075, 830)
315/80R22.5 (Tread B)	L	05152990000	23	68	19.8	502	42.7	1086	12.5	318	13.8	351	9.00, 8.25	13.8	351	484	301	162	73	10000, 130 (4540, 900)	9090, 130 (4125, 900)
11R24.5	H	05686540000	24	68	20.6	524	43.9	1115	11.2	284	12.2	310	8.25, 7.50	12.5	318	472	293	135	61	7160, 120 (3250, 830)	6610, 120 (3000, 830)
12R24.5	H	05686560000	24	68	21.1	535	45.0	1142	11.4	290	12.6	319	9.00, 8.25	13.5	343	460	286	149	67	7830, 120 (3550, 830)	7160, 120 (3250, 830)

TUBELESS TIRES ON 15 DEGREE DROP CENTER RIMS

Note - Rim listed first is the measuring rim. Minimum Dual Spacing calculated without chains. * - ECE Certified # - Exceeding the lawful speed limit is neither recommended nor endorsed. Overall widths will change 0.1 inch (2.5 mm) for each 1/4 inch change in rim width. Minimum dual spacing should be adjusted accordingly. 315/80R22.5 tires used on 8.25" rims are restricted to a maximum of 7610 lbs at 120 psi. Continental Tire the Americas, LLC reserves the right to change product specifications at any time without notice or obligations. Please consult rim manufacturers load and inflation limits. Never exceed rim manufacturers limits without permission of component manufacturer.

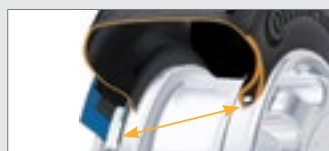


Tread pattern and compound integrated for optimal original mileage.

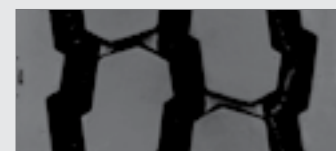


Optimized contour ensures higher load reserves and less deformation.

Wide tread and shoulder ribs for improved wear and increased performance.



Improved bead construction for structural durability and extended product life.



Patented tread pattern and contour provide stable casing value through reduced stone retention and improved impact resistance.

Applications: Coal haulers, logging, construction and other all-position service.