

# Conti Urban HA3

## Urban All-Position

Applications: Urban steer/all-position, city bus use.



Legend:

3G Casing	SmartWay Verified	With TPMS Sensor	Retread Available
-----------	-------------------	------------------	-------------------

# Conti Urban HA3

## Urban All-Position

● GOODS ● PEOPLE ● CONSTRUCTION



### PRODUCT DATA



TIRE SIZE	LOAD RANGE	ARTICLE NUMBER	TREAD DEPTH (32nds)	MAX SPEED (MPH)	STATIC LOADED RADIUS		OVERALL INFLATED DIAMETER		OVERALL INFLATED WIDTH		LOADED SECTION WIDTH		APPROVED RIM(S)	MINIMUM DUAL SPACING		REVS PER UNIT		TIRE WEIGHT		MAX. LOAD @ INFLATION	
					IN	MM	IN	MM	IN	MM	IN	MM		IN	MM	MI	KM	LB	KG	SINGLE	DUAL
					LBS, PSI (KG, KPa)		LBS, PSI (KG, KPa)														
305/70R22.5*	L	05140860000	23	68	18.6	473	39.9	1014	11.6	294	12.6	320	9.00, 8.25	13.5	343	519	322	130	59	7830, 130 (3550, 900)	6940, 130 (3150, 900)

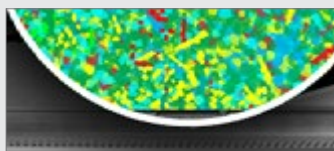
TUBELESS TIRES ON 15 DEGREE DROP CENTER RIMS

Note - Rim listed first is the measuring rim. Minimum Dual Spacing calculated without chains. These specifications subject to change without notice. \* - ECE Certified. # - Exceeding the lawful speed limit is neither recommended nor endorsed. Overall widths will change 0.1 inch (2.5 mm) for each 1/4 inch change in rim width. Minimum dual spacing should be adjusted accordingly. Continental Tire the Americas, LLC reserves the right to change product specifications at any time without notice or obligations. Please consult rim manufacturers load and inflation limits. Never exceed rim manufacturers limits without permission of component manufacturer.



**Increased sidewall gauge** for improved resistance against curbing, cuts and abrasions.

**Sidewall wear indicator** for visual cue to trigger rotation.



**New urban tread compound** for prolonged mileage performance with excellent driving characteristics.



**Comfortable ride** for driver and passengers through extremely quiet running tread.



**Durable casing** for premium retreadability and enhanced mileage.

**Applications:** Urban steer/all-position, city bus use.