

Conti Scandinavia HD3

19.5" Regional Drive for Winter

Applications: Drive axle tire for extreme weather conditions.



Legend:

3G Casing	SmartWay Verified	With TPMS Sensor	Retread Available

Conti Scandinavia HD3

19.5" Regional Drive for Winter

GOODS PEOPLE CONSTRUCTION



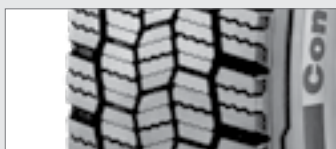
PRODUCT DATA



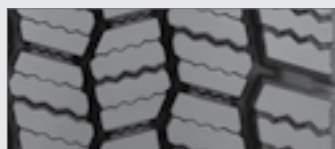
TIRE SIZE	LOAD RANGE	ARTICLE NUMBER	TREAD DEPTH (32nds)	MAX SPEED (MPH)	STATIC LOADED RADIUS		OVERALL INFLATED DIAMETER		OVERALL INFLATED WIDTH		LOADED SECTION WIDTH		APPROVED RIM(S)	MINIMUM DUAL SPACING		REVS PER UNIT		TIRE WEIGHT		MAX. LOAD @ INFLATION			
					IN	MM	IN	MM	IN	MM	IN	MM		IN	MM	MI	KM	LB	KG	LB, PSI	DUAL	LB, PSI	DUAL
					LBS, PSI (KG, KPa)		LBS, PSI (KG, KPa)																
225/70R19.5*	G	05230340000	19	87	151	383	32.0	813	8.6	218	9.3	236	600, 675	10.0	254	647	402	66	30	3970, 110 (1800, 760)	3750, 110 (1700, 760)		
245/70R19.5*	H	05230360000	21	81	155	394	33.3	845	9.5	241	10.4	264	750, 675	11.0	279	622	386	82	37	4940, 120 (2240, 830)	4675, 120 (2120, 830)		

TUBELESS TIRES ON 15 DEGREE DROP CENTER RIMS

Note - Rim listed first is the measuring rim. Minimum Dual Spacing calculated without chains. * - ECE Certified # - Exceeding the lawful speed limit is neither recommended nor endorsed. Overall widths will change 0.1 inch (2.5 mm) for each 1/4 inch change in rim width. Minimum dual spacing should be adjusted accordingly. Continental Tire the Americas, LLC reserves the right to change product specifications at any time without notice or obligations. Please consult rim manufacturers load and inflation limits. Never exceed rim manufacturers limits without permission of component manufacturer.



Deep tread and low void design ensures long removal miles.



Heavy siping provides **numerous gripping edges** for excellent traction on wet roads.



Open shoulder tread design for increased traction in snow.
Increased footprint contact area delivers superior traction and stability.



All season compound to deliver excellent traction in all weather conditions without sacrificing removal miles.

Applications: Drive axle tire for extreme weather conditions.