

Conti HSL 3 (Rename of Conti Hybrid HS3)

Fuel Efficient, Super Regional Steer

Applications: Over the road super regional steer and all position use.





Straight4ward
New Nomenclature Product Name Change

Legend:

3G Casing	SmartWay Verified	With TPMS Sensor	Retread Available
-----------	-------------------	------------------	-------------------

Conti HSL 3 (Rename of Conti Hybrid HS3)

Fuel Efficient, Super Regional Steer

✓ GOODS ● PEOPLE ● CONSTRUCTION



PRODUCT DATA



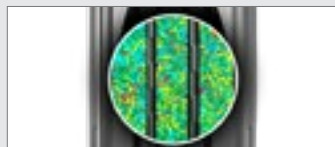
	TIRE SIZE	LOAD RANGE	ARTICLE NUMBER	TREAD DEPTH (32nds)	MAX SPEED (MPH)	STATIC LOADED RADIUS		OVERALL INFLATED DIAMETER		OVERALL INFLATED WIDTH		LOADED SECTION WIDTH		APPROVED RIM(S)	MINIMUM DUAL SPACING		REVS PER UNIT		TIRE WEIGHT		MAX. LOAD @ INFLATION	
						IN	MM	IN	MM	IN	MM	IN	MM		IN	MM	MI	KM	LB	KG	SINGLE	DUAL
						LBS, PSI (KG, KPa)		LBS, PSI (KG, KPa)														
Conti HSL 3	11R22.5	G	05111560000	20	75	19.5	495	41.6	1056	11.7	296	13.1	331	8.25, 750	12.5	318	495	308	118	54	6175, 105 (2800, 720)	5840, 105 (2650, 720)
	11R22.5	H	05111570000	20	75	19.5	495	41.6	1056	11.7	296	13.1	331	8.25, 750	12.5	318	495	308	119	54	6610, 120 (3000, 830)	6005, 120 (2725, 830)
	295/75R22.5	G	05111580000	20	75	18.7	474	40.0	1017	11.5	292	12.3	313	8.25, 900	12.5	318	518	322	114	52	6175, 110 (2800, 760)	5675, 110 (2575, 760)
	295/75R22.5	H	05111590000	20	75	18.7	474	40.0	1017	11.5	292	12.3	313	8.25, 900	12.5	318	518	322	115	52	7160, 120 (3250, 830)	6610, 120 (3000, 830)
Conti Hybrid HS3	11R22.5	G	05110780000	20	75	19.5	495	41.6	1056	11.7	296	13.1	331	8.25, 750	12.5	318	495	308	118	54	6175, 105 (2800, 720)	5840, 105 (2650, 720)
	11R22.5	H	05110790000	20	75	19.5	495	41.6	1056	11.7	296	13.1	331	8.25, 750	12.5	318	495	308	119	54	6610, 120 (3000, 830)	6005, 120 (2725, 830)
	295/75R22.5	G	05110950000	20	75	18.7	474	40.0	1017	11.5	292	12.3	313	8.25, 900	12.5	318	518	322	114	52	6175, 110 (2800, 760)	5675, 110 (2575, 760)
	295/75R22.5	H	05110960000	20	75	18.7	474	40.0	1017	11.5	292	12.3	313	8.25, 900	12.5	318	518	322	115	52	7160, 120 (3250, 830)	6610, 120 (3000, 830)

TUBELESS TIRES ON 15 DEGREE DROP CENTER RIMS

Note - Rim listed first is the measuring rim. Minimum Dual Spacing calculated without chains. # - Exceeding the lawful speed limit is neither recommended nor endorsed. Overall widths will change 0.1 inch (2.5 mm) for each 1/4 inch change in rim width. Minimum dual spacing should be adjusted accordingly. Continental Tire the Americas, LLC reserves the right to change product specifications at any time without notice or obligations. Please consult rim manufacturers load and inflation limits. Never exceed rim manufacturers limits without permission of component manufacturer.



Increased stiffness in the **belt package** promotes smooth, even tread wear.



Advanced tread compounding delivers long removal mileage and low rolling resistance.



Fuel Saving Edge technology designed to increase fuel efficiency and application flexibility.



Built on the **Conti 3G Casing** for maximum retreadability.

Applications: Over the road super regional steer and all position use.