

# Conti Hybrid HT3 19.5" Regional Trailer

Applications: Long haul/Regional over the highway trailer use.





Legend:

3G Casing	SmartWay Verified	With TPMS Sensor	Retread Available
-----------	-------------------	------------------	-------------------

# Conti Hybrid HT3

## 19.5" Regional Trailer

GOODS PEOPLE CONSTRUCTION



### PRODUCT DATA



TIRE SIZE	LOAD RANGE	ARTICLE NUMBER	TREAD DEPTH (32nds)	MAX SPEED (MPH)	STATIC LOADED RADIUS		OVERALL INFLATED DIAMETER		OVERALL INFLATED WIDTH		LOADED SECTION WIDTH		APPROVED RIM(S)	MINIMUM DUAL SPACING		REVS PER UNIT		TIRE WEIGHT		MAX. LOAD @ INFLATION			
					IN	MM	IN	MM	IN	MM	IN	MM		IN	MM	IN	MM	MI	KM	LB	KG	LBS, PSI (KG, KPa)	LBS, PSI (KG, KPa)
265/70R19.5	H	05321670000	17	68	15.8	401	34.7	881	10.3	262	10.7	272	7.50, 6.75, 8.25	11.6	295	609	378	80	36	6005, 125 (2725, 860)	5675, 125 (2575, 860)		
285/70R19.5	J	05321680000	18	68	16.2	412	35.9	911	11.1	283	11.6	294	8.25, 7.50, 9.00	12.5	318	690	366	93	42	7390, 130 (3350, 900)	6940, 130 (3150, 900)		

TUBELESS TIRES ON 15 DEGREE DROP CENTER RIMS

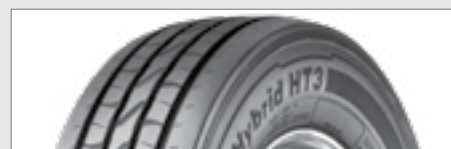
Note - Rim listed first is the measuring rim. Minimum Dual Spacing calculated without chains. \* - ECE Certified # - Exceeding the lawful speed limit is neither recommended nor endorsed. Overall widths will change 0.1 inch (2.5 mm) for each 1/4 inch change in rim width. Minimum dual spacing should be adjusted accordingly. Continental Tire the Americas, LLC reserves the right to change product specifications at any time without notice or obligations. Please consult rim manufacturers load and inflation limits. Never exceed rim manufacturers limits without permission of component manufacturer.



**Advanced application-optimized compound** adds up to significant improvements in rolling resistance and mileage.



**Narrowed groove widths** result in increased pattern volume which improves wear resistance to provide high mileage performance.



**Low rolling resistance sidewall compound** used to reduce heat through friction elimination.

**Applications:** Long haul/Regional over the highway trailer use.