

# Conti Hybrid HS3

## 19.5" Regional All-Position

Applications: Long haul/Regional over the highway all-position use.





Legend:



# Conti Hybrid HS3

## 19.5" Regional All-Position

✓ GOODS ✓ PEOPLE ● CONSTRUCTION



### PRODUCT DATA



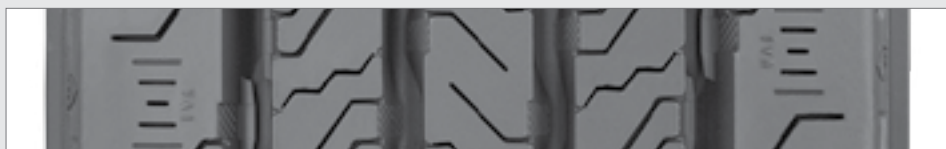
TIRE SIZE	LOAD RANGE	ARTICLE NUMBER	TREAD DEPTH (32nds)	MAX SPEED (MPH)	STATIC LOADED RADIUS		OVERALL INFLATED DIAMETER		OVERALL INFLATED WIDTH		LOADED SECTION WIDTH		APPROVED RIM(S)	MINIMUM DUAL SPACING		REVS PER UNIT		TIRE WEIGHT		MAX. LOAD @ INFLATION	
					IN	MM	IN	MM	IN	MM	IN	MM		IN	MM	MI	KM	LB	KG	SINGLE	DUAL
					LBS, PSI (KG, KPa)		LBS, PSI (KG, KPa)														
225/70R19.5	G	05124360000	16	87	14.9	378	31.9	810	8.6	218	9.4	239	6.00, 6.75	10.0	254	649	403	62	28	3970, 110 (1800, 760)	3750, 110 (1700, 760)
245/70R19.5	G	05122970000	16	81	15.2	386	32.8	833	9.5	241	10.3	262	6.75, 7.50	11.0	279	631	392	75	34	4540, 110 (2060, 760)	4410, 110 (2000, 760)
245/70R19.5	H	05124830000	16	81	15.2	386	32.8	833	9.5	241	10.3	262	6.75, 7.50	11.0	279	631	392	75	34	4940, 120 (2240, 830)	4675, 120 (2120, 830)
265/70R19.5	G	05124840000	17	81	15.8	401	34.7	881	10.3	262	10.7	272	7.50, 6.75, 8.25	11.2	286	613	380	82	37	5510, 115 (2500, 790)	5205, 115 (2360, 790)
285/70R19.5	H	05121130000	18	81	16.2	412	35.9	911	11.1	283	11.6	294	8.25, 7.50, 9.00	12.5	318	590	366	93	42	6610, 125 (3000, 860)	6175, 125 (2800, 860)

TUBELESS TIRES ON 15 DEGREE DROP CENTER RIMS

Note - Rim listed first is the measuring rim. Minimum Dual Spacing calculated without chains. # - Exceeding the lawful speed limit is neither recommended nor endorsed. Overall widths will change 0.1 inch (2.5 mm) for each 1/4 inch change in rim width. Minimum dual spacing should be adjusted accordingly. Continental Tire the Americas, LLC reserves the right to change product specifications at any time without notice or obligations. Please consult rim manufacturers load and inflation limits. Never exceed rim manufacturers limits without permission of component manufacturer.



**Two-layer tread construction** combines high mileage performance in the cap compound with significant rolling resistance improvements in the base compound.



**Narrowed groove widths** result in increased pattern volume which improves wear resistance to guarantee high mileage performance.

**Pocket sipe technology** with full-depth sipes to enhance water displacement and improve wet performance over the life of the tire.

**Applications:** Long haul/Regional over the highway all-position use.