

# Conti Hybrid HD3 19.5" Regional Drive

Applications: Long haul/Regional over the highway drive use.



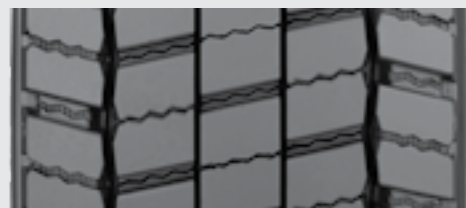
Legend:

3G Casing	SmartWay Verified	With TPMS Sensor	Retread Available

# Conti Hybrid HD3

## 19.5" Regional Drive

✔ GOODS 
 ✔ PEOPLE 
 ● CONSTRUCTION



### PRODUCT DATA



TIRE SIZE	LOAD RANGE	ARTICLE NUMBER	TREAD DEPTH (32nds)	MAX SPEED (MPH)	STATIC LOADED RADIUS		OVERALL INFLATED DIAMETER		OVERALL INFLATED WIDTH		LOADED SECTION WIDTH		APPROVED RIM(S)	MINIMUM DUAL SPACING		REVS PER UNIT		TIRE WEIGHT		MAX. LOAD @ INFLATION	
					IN	MM	IN	MM	IN	MM	IN	MM		IN	MM	MI	KM	LB	KG	SINGLE	DUAL
					LBS, PSI (KG, KPa)		LBS, PSI (KG, KPa)														
225/70R19.5	G	05223810000	18	87	15.0	381	32.0	813	8.6	218	9.3	237	600, 675	10.0	254	647	402	66	30	3970, 110 (1800, 760)	3750, 110 (1700, 760)
245/70R19.5	G	05222240000	20	81	15.4	391	33.3	846	9.5	241	10.4	264	750, 675	11.0	279	622	386	82	37	4540, 110 (2060, 760)	4410, 110 (2000, 760)
245/70R19.5	H	05220900000	20	81	15.4	391	33.3	846	9.5	241	10.4	264	750, 675	11.0	279	622	386	82	37	4940, 120 (2240, 830)	4675, 120 (2120, 830)
265/70R19.5 (Tread B)	H	05220890000	21	81	15.8	401	34.7	881	10.3	262	10.7	272	750, 675, 825	11.2	286	613	381	86	39	5510, 115 (2500, 790)	5205, 115 (2360, 790)
285/70R19.5 (Tread B)	H	05220880000	21	81	16.2	412	35.9	911	11.1	283	11.6	294	825, 750, 900	12.5	318	590	366	97	44	6610, 125 (3000, 860)	6175, 125 (2800, 860)

TUBELESS TIRES ON 15 DEGREE DROP CENTER RIMS

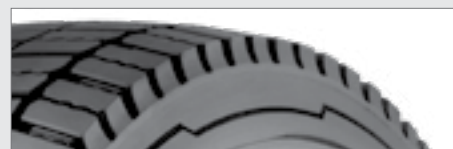
Note - Rim listed first is the measuring rim. Minimum Dual Spacing calculated without chains. \* - ECE Certified. # - Exceeding the lawful speed limit is neither recommended nor endorsed. Overall widths will change 0.1 inch (2.5 mm) for each 1/4 inch change in rim width. Minimum dual spacing should be adjusted accordingly. Continental Tire the Americas, LLC reserves the right to change product specifications at any time without notice or obligations. Please consult rim manufacturers load and inflation limits. Never exceed rim manufacturers limits without permission of component manufacturer.



Advanced application-optimized **Hybrid tread compound** adds up to significant improvements in rolling resistance and mileage.



**Narrowed groove widths** result in increased pattern volume which improves wear resistance to guarantee high mileage performance.



**Chamfered Edge** reduces deformation amplitude in sidewall and bead area which results in improved rolling resistance and helps lower fuel consumption.

**Applications:** Long haul/Regional over the highway drive use.