

Conti EcoPlus HS3+

UP
TO

12% Better Mileage than
Bridgestone R283A™ Ecopia*

Conti EcoPlus HS3+ excels in the Long Haul Steer/All-Position category, delivering more miles, improved decoupler durability, and an even wear footprint. Experience the Continental difference: Mileage, Fuel Efficiency, and Durability.

*Claims based on fleet field test over 9 months on 295/75R22.5 Bridgestone R283A Ecopia, 295/75R22.5 Conti EcoPlus HS3, and 295/75R22.5 Conti EcoPlus HS3+.

Conti EcoPlus HS3+

Conti EcoPlus HS3+

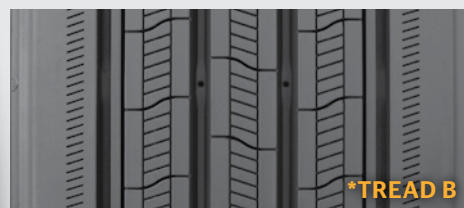
Legend:

3G Casing	SmartWay Verified	With TPMS Sensor	Retread Available
-----------	-------------------	------------------	-------------------

Conti EcoPlus HS3+ / Conti EcoPlus HS3

Fuel-Efficient, Long Haul Steer

✓ GOODS ● PEOPLE ● CONSTRUCTION



PRODUCT DATA



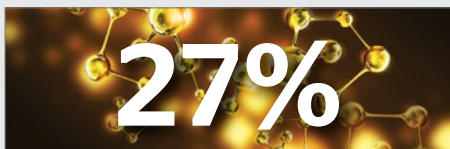
	TIRE SIZE	LOAD RANGE	ARTICLE NUMBER	TREAD DEPTH (32nds)	MAX SPEED (MPH)	STATIC LOADED RADIUS		OVERALL INFLATED DIAMETER		OVERALL INFLATED WIDTH		LOADED SECTION WIDTH		APPROVED RIM(S)	MINIMUM DUAL SPACING		REVS PER UNIT		TIRE WEIGHT		MAX. LOAD @ INFLATION	
						IN	MM	IN	MM	IN	MM	IN	MM		IN	MM	MI	KM	LB	KG	LBS, PSI (KG, KPa)	LBS, PSI (KG, KPa)
Conti EcoPlus HS3+	11R22.5	G	05126130000	19	75	19.5	495	41.8	1062	11.7	296	13.1	331	8.25, 7.50	12.5	318	495	308	123	56	6175, 105 (2800, 720)	5840, 105 (2650, 720)
	11R22.5	H	05126140000	19	75	19.5	495	41.8	1062	11.7	296	13.1	331	8.25, 7.50	12.5	318	495	308	125	57	6610, 120 (3000, 830)	6005, 120 (2725, 830)
	295/75R22.5	G	05126150000	19	75	18.7	475	39.9	1013	11.4	290	12.3	312	8.25, 9.00	12.5	318	519	322	114	52	6175, 110 (2800, 760)	5675, 110 (2575, 760)
	295/75R22.5	H	05126160000	19	75	18.7	475	39.9	1013	11.4	290	12.3	312	8.25, 9.00	12.5	318	519	322	117	53	7160, 123 (3250, 850)	6610, 123 (3000, 850)
	11R24.5	H	05126170000	19	75	20.4	518	43.8	1113	11.7	297	13.1	333	8.25, 7.50	12.5	318	473	294	134	61	7160, 120 (3250, 830)	6610, 120 (3000, 830)
	285/75R24.5	H	05126180000	19	75	19.3	490	41.5	1054	11.4	289	12.9	328	8.25	12.5	318	499	310	123	56	6780, 120 (3075, 830)	6175, 120 (2800, 830)

Conti EcoPlus HS3

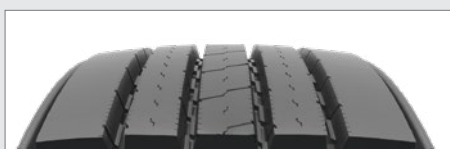
295/60R22.5* (Tread B)	J	05111670000	15	75	17.1	434	37.0	940	11.5	292	12.0	304	9.00, 9.75	12.9	329	574	356	110	50	7390, 130 (3350, 900)	6780, 130 (3075, 900)
------------------------	---	-------------	----	----	------	-----	------	-----	------	-----	------	-----	------------	------	-----	-----	-----	-----	----	-----------------------	-----------------------

TUBELESS TIRES ON 15 DEGREE DROP CENTER RIMS

Note - Rim listed first is the measuring rim. Minimum Dual Spacing calculated without chains. * - ECE Certified. 295/60R22.5 size designated for car carrier application. # - Exceeding the lawful speed limit is neither recommended nor endorsed. Overall widths will change 0.1 inch (2.5 mm) for each 1/4 inch change in rim width. Minimum dual spacing should be adjusted accordingly. Continental Tire the Americas, LLC reserves the right to change product specifications at any time without notice or obligations. Please consult rim manufacturers load and inflation limits. Never exceed rim manufacturers limits without permission of component manufacturer.



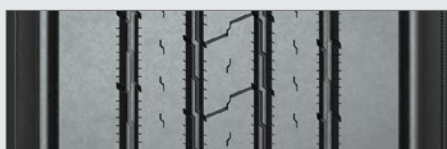
Conti EcoPlus HS3+ has a **27% improvement in removal mileage with even wear** over its predecessor, Conti EcoPlus HS3.



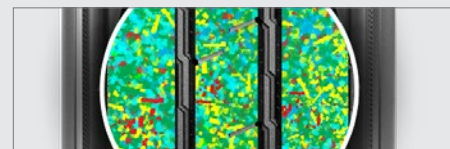
Tread profile reduces sensitivity to road surface, fleet, and vehicle variations allowing for improved performance throughout tire life.



10% improvement in de-coupler durability, an essential benefit for products in the steer/all-position category to extend tire life.



Improved footprint shape delivers significant wear improvements for increased removal miles.



Technologically advanced cap compounds provide improved cut and tear resistance for increased mileage.



Built on the innovative **Conti 3G Casing** for maximum retreadability.