

Conti EcoPlus HS3

Fuel Efficient,
Long Haul Steer

Applications: Long haul



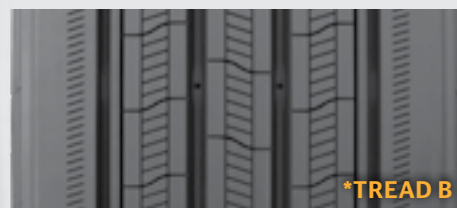
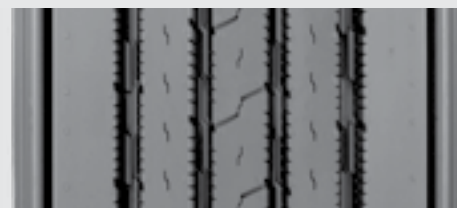
Legend:

3G Casing	SmartWay Verified	With TPMS Sensor	Retread Available
-----------	-------------------	------------------	-------------------

Conti EcoPlus HS3

Fuel Efficient Long Haul Steer

✓ GOODS ● PEOPLE ● CONSTRUCTION



PRODUCT DATA



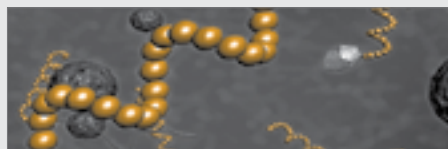
TIRE SIZE	LOAD RANGE	ARTICLE NUMBER	TREAD DEPTH (32nds)	MAX SPEED (MPH)	STATIC LOADED RADIUS		OVERALL INFLATED DIAMETER		OVERALL INFLATED WIDTH		LOADED SECTION WIDTH		APPROVED RIM(S)	MINIMUM DUAL SPACING		REVS PER UNIT		TIRE WEIGHT		MAX. LOAD @ INFLATION	
					IN	MM	IN	MM	IN	MM	IN	MM		IN	MM	MI	KM	LB	KG	SINGLE	DUAL
					LBS, PSI (KG, KPa)		LBS, PSI (KG, KPa)														
11R22.5	G	05110530000	19	75	19.5	495	41.8	1062	11.7	296	131	331	8.25, 750	12.5	318	495	308	123	56	6175, 105 (2800, 720)	5840, 105 (2650, 720)
11R22.5	H	05110520000	19	75	19.5	495	41.8	1062	11.7	296	131	331	8.25, 750	12.5	318	495	308	127	58	6610, 120 (3000, 830)	6005, 120 (2725, 830)
295/60R22.5* (Tread B)	J	05111670000	15	75	17.1	434	37.0	940	11.5	292	12.0	304	9.00, 9.75	12.9	329	574	356	110	50	7390, 130 (3350, 900)	6780, 130 (3075, 900)
295/75R22.5	G	05110510000	19	75	18.7	475	39.9	1013	11.4	290	12.3	312	8.25, 9.00	12.5	318	519	322	114	52	6175, 110 (2800, 760)	5675, 110 (2575, 760)
295/75R22.5	H	05110580000	19	75	18.7	475	39.9	1013	11.4	290	12.3	312	8.25, 9.00	12.5	318	519	322	120	54	7160, 120 (3250, 830)	6610, 120 (3000, 830)
11R24.5	H	05110560000	19	75	20.4	518	43.8	1113	11.7	297	131	333	8.25, 750	12.5	318	472	293	138	63	7160, 120 (3250, 830)	6610, 120 (3000, 830)
285/75R24.5	H	05110540000	19	75	19.3	490	41.5	1054	11.4	289	12.9	38	8.25	12.5	318	499	310	123	56	6780, 120 (3075, 830)	6175, 120 (2800, 830)

TUBELESS TIRES ON 15 DEGREE DROP CENTER RIMS

Note - Rim listed first is the measuring rim. Minimum Dual Spacing calculated without chains. * - ECE Certified. 295/60R22.5 size designated for car carrier application. # - Exceeding the lawful speed limit is neither recommended nor endorsed. Overall widths will change 0.1 inch (2.5 mm) for each 1/4 inch change in rim width. Minimum dual spacing should be adjusted accordingly. Continental Tire the Americas, LLC reserves the right to change product specifications at any time without notice or obligations. Please consult rim manufacturers load and inflation limits. Never exceed rim manufacturers limits without permission of component manufacturer.



New tread profile reduces sensitivity to road surface, fleet, and vehicle variations allowing for improved performance throughout tire life.



Advanced compounding balances cut and tear resistance with optimized rolling resistance satisfying EPA SmartWay and CARB requirements.



Superior casing construction allows high air dispersion for improved durability and retreadability.

Applications: Long Haul