

Conti Coach HA3 *(with Active Sensor)*

All-Position Long Haul Coach

Applications: Long haul, over the highway steering and all-position use, for coach and large RV use.





Legend:

3G Casing	SmartWay Verified	With TPMS Sensor	Retread Available
-----------	-------------------	------------------	-------------------

Conti Coach HA3 (with Active Sensor)

All-Position Long Haul Coach

● GOODS ● **✓ PEOPLE** ● CONSTRUCTION



PRODUCT DATA



TIRE SIZE	LOAD RANGE	ARTICLE NUMBER	TREAD DEPTH (32nds)	MAX SPEED (MPH)	STATIC LOADED RADIUS		OVERALL INFLATED DIAMETER		OVERALL INFLATED WIDTH		LOADED SECTION WIDTH		APPROVED RIM(S)	MINIMUM DUAL SPACING		REVS PER UNIT		TIRE WEIGHT		MAX. LOAD @ INFLATION			
					IN	MM	IN	MM	IN	MM	IN	MM		IN	MM	MI	KM	LB	KG	SINGLE	DUAL	LBS, PSI (KG, KPa)	LBS, PSI (KG, KPa)
315/80R22.5 *	L	05651710000	17	75	19.7	501	42.4	1077	12.4	315	13.6	345	9.00, 8.25	13.8	351	488	303	141	64	9090, 130 (4125, 900)	8270, 130 (3750, 900)		

TUBELESS TIRES ON 15 DEGREE DROP CENTER RIMS

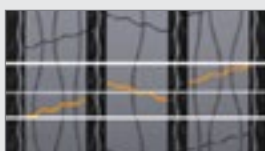
Note - Rim listed first is the measuring rim. Minimum Dual Spacing calculated without chains. These specifications subject to change without notice. * - ECE Certified # - Exceeding the lawful speed limit is neither recommended nor endorsed. Overall widths will change 0.1 inch (2.5 mm) for each 1/4 inch change in rim width. Minimum dual spacing should be adjusted accordingly. 315/80R22.5 tires used on 8.25" rims are restricted to a maximum of 7610 lbs at 120 psi. Continental Tire the Americas, LLC reserves the right to change product specifications at any time without notice or obligations. Please consult rim manufacturers load and inflation limits. Never exceed rim manufacturers limits without permission of component manufacturer.



Extra load-carrying capacity with a specially reinforced **Stable Bead Technology**.



Durable casing for premium retreadability and enhanced mileage.



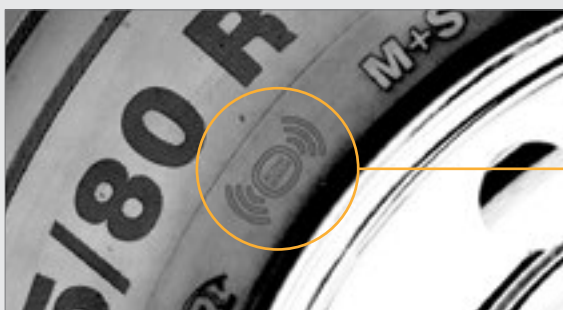
Noise-Reducing Tread Design for serene and comfortable travel.



A lifetime of all-weather traction with **interlocking 3D sipes**.



Embedded with **TPMS Active Sensor** Technology.



Look for the Active Sensor mark located on the tire side wall to identify the new Conti Coach HA3 with Embedded TPMS Sensors.

To get connected with one of our Digital Tire Monitoring Solutions, visit www.continental-truck.com.

Applications: Long haul, over the highway steering and all-position use, for coach and large RV use.