



Continental LifeCycle™

Coming round again
for a cleaner world.



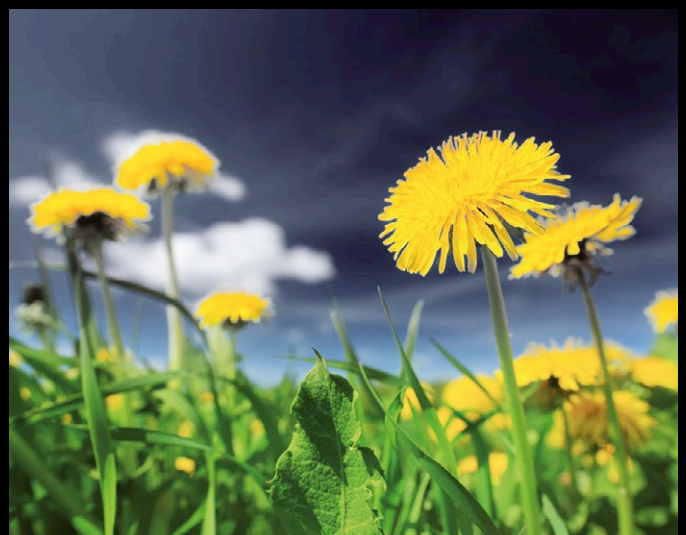
Continental goes green.

Continental always aims to be at the forefront of ecological innovation, adopting eco-friendly changes at every step of the way, from initial tire development right through to production.

As a tire manufacturer, Continental is seeking to minimize the use of environmentally harmful materials with a heavy carbon footprint. Throughout the production process, the aim is to increase the use of recycled materials and reduce to a minimum the use of fossil-based resources like oil.

Continental is committed to clean, energy-efficient production - for example by recovering more waste heat from the curing process, which can then be fed back to the production process.

At the same time, Continental has also earned itself a reputation as a pioneer in the development and research of innovative and renewable raw materials. For example, Continental is currently taking part in a research project to examine the potential of Russian dandelions as an alternative source of natural rubber for industrial applications. Such a solution would significantly reduce the pressure on conventional rubber supplies.





Continental LifeCycle™.

The tire that protects for the environment. Reusing tire casings means reducing the amount of energy and raw materials that go into the tire manufacturing process - which also brings down prices.

The Continental LifeCycle™ is a retreaded solid rubber tire based on selected casings which have been subjected to exhaustive, standardized quality controls. Following these checks, the tread is removed from the casing and completely replaced, using materials identical to those used in the production of new tires. This way the retreaded tire achieves the highest possible quality standards.

With your support, this large-scale recycling initiative will help us reduce the number of scrap tires needing disposal. It will also reduce the amount of resources used in production, while at the same time saving energy and reducing emissions of climate-changing CO₂. As well as protecting the environment, this will also help you save money. Because reusing tires is an efficient and eco-friendly solution that cuts production costs. And that, in turn, means lower prices.



Continental Reifen Deutschland GmbH

Commercial Specialty Tires
Büttnerstraße 25, 30165 Hannover
T. +49 511 938-01
mail_service@conti.de
www.continental-specialty-tires.com



Dimension		Rim type	Tread	Rim
8"				
125/75-8 / 3.00	(15x4½-8)	SIT	Continental LifeCycle™	3.00 D-8
5.00-8 / 3.00		S SIT	Continental LifeCycle™	3.00 D-8
150/75-8 / 4.33	(16x6-8)	SIT	Continental LifeCycle™	4.33 R-8
180/70-8 / 4.33	(18x7-8)	SIT	Continental LifeCycle™	4.33 R-8
9"				
140/55-9 / 4.00		SIT	Continental LifeCycle™	4.00 E-9
6.00-9 / 4.00		S SIT	Continental LifeCycle™	4.00 E-9
200/75-9 / 6.00	(21x8-9)	SIT	Continental LifeCycle™	6.00 E-9
10"				
6.50-10 / 5.00		S SIT	Continental LifeCycle™	5.00 F-10
200/50-10 / 6.50		SIT	Continental LifeCycle™	6.50 F-10
225/75-10 / 6.50	(23x9-10)	SIT	Continental LifeCycle™	6.50 F-10
12"				
7.00-12 / 5.00		S SIT	Continental LifeCycle™	5.00 S-12
250/60-12 / 8.00	(23x10-12)	SIT	Continental LifeCycle™	8.00 G-12
250/75-12 / 8.00	(27x10-12)	SIT	Continental LifeCycle™	8.00 G-12
15"				
8.25-15 / 6.50		S SIT	Continental LifeCycle™	6.50-15
225/75-15 / 7.00	(28x9-15)	SIT	Continental LifeCycle™	7.00-15
250/70-15 / 7.00	(250-15)	SIT	Continental LifeCycle™	7.00-15
355/65-15 / 9.75		SIT	Continental LifeCycle™	9.75-15