

GENERATION 3. DRIVEN BY YOUR NEEDS.

Technical data and air pressure recommendations

Tire size	Operating code				EU tire label	Rim	Tire dimensions						Load capacity (kg) per axle at tire pressure ⁶⁾ (bar) (psi)										
	Pattern	LI/SI ¹⁾	PR	M+S			Speed Index and reference speed (km/h)	TT/TL ²⁾	Rolling noise ³⁾	Wet grip ⁴⁾	External rolling noise ⁵⁾	Min. distance between rim centers	Max. standard value in service	Actual value	Stat. radius	Rolling circumference	Tire fitment	7.5 (109)	8.0 (116)	8.5 (123)	9.0 (131)		
265/70 R 19.5	Conti Urban HA3 M+S	143/138 M	16	M+S	M 130	TL	**	**	**	6.75 7.50	286 295	264 272	881	254 262	867	396	2645	143 138	S D	4930 8540	5190 8990	5450 9440	
315/60 R 22.5	Conti Urban HA3 M+S	152/148 J	16	M+S	J 100	TL	C	B	◊ 70	9.00 9.75	344 352	318 326	966	305 313	950	444	2932	152 148	S D	6135 10885	6460 11465	6780 12035	7100 12600
275/70 R 22.5	Conti Urban HA3	150/145 J (152/148 E)	16		J 100 (E 70)	TL	D	B	◊ 70	7.50 8.25	303 311	279 287	974	267 282	968	449	2989	152 150 148 145	S S D D	6135 5790 10885 10025	6460 6095 11465 10555	6780 6400 12035 11080	7100 6700 12600 11600
	Conti Urban HA3 M+S	150/145 J (152/148 E)	16	M+S	J 100 (E 70)	TL	D	B	◊ 70														
305/70 R 22.5	Conti Urban HA3 M+S	152/148 K (154/150 E)	20	M+S	K 110 (E 70)	TL	C	B	◊ 70	8.25 9.00	334 343	309 317	1018	297 305	1000	463	3050	154 152 150 148	S S D D	6480 6420 11580 11395	6825 6760 12195 12000	7160 7100 12800 12600	7500 13400

Data acc. to DIN 7805/4, WdK-Guidelines 134/2, 142/2, 143/14, 143/25
 1) Load index single/dual wheel fitment and speed symbol
 2) TT = Tube Type, TL = Tubeless
 3) Fuel efficiency
 4) Wet grip
 5) External rolling noise (db)
 6) For tire pressures of 8.0 bar (116 psi) or greater, use valve slit cover plate
 ** Label values in preparation



6A6FC.en 2015.03
 Continental Reifen Deutschland GmbH
 Büttnerstraße 25
 30165 Hannover
 Germany

www.continental-truck-tires.com
 www.continental-corporation.com



People

Whoever you transport through the city: The Conti Urban.

Conti Urban

- › Maximum safety
- › Increased durability
- › Comfortable ride



Conti Urban HA3

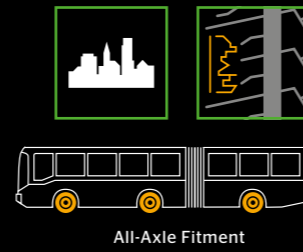
Conti Urban HA3 M+S



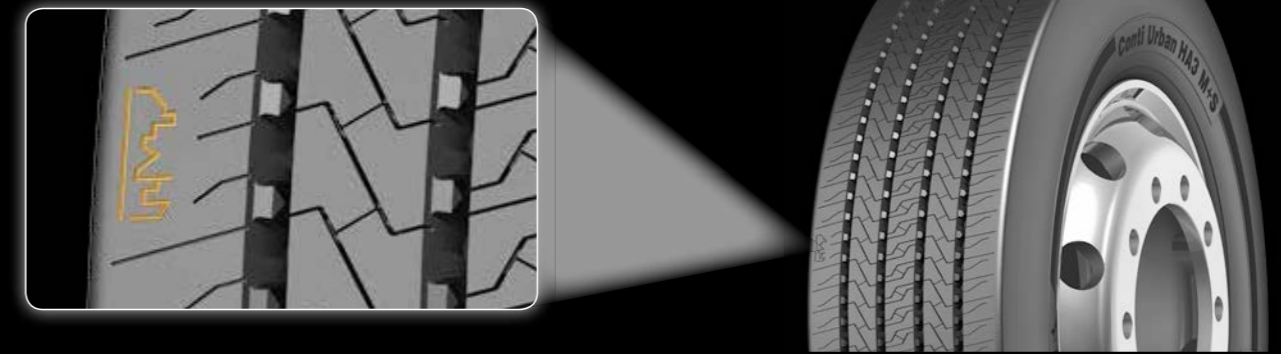
Conti Urban

The tough tire for downtown and city traffic.

GENERATION 3. DRIVEN BY YOUR NEEDS.



Made for urban driving conditions



Conti Urban HA3

Driving short distances in the city means maximum stress for every kind of tire. Narrow streets, curbs, and stop-and-go traffic require premium tire quality and safety. The Conti Urban HA3 features enhanced robustness and is exclusively designed for urban challenges. With the new dedicated urban tread compound and optimized tread void ratio, combined with a 20 % increase in sidewall thickness, the Conti Urban HA3 delivers up to 20 % more mileage and 2 % less fuel consumption*: the Conti Urban HA3, delivering safety to society.

Further technical features

- › Dedicated new urban bus tire contour layout, improving tire endurance together with wear picture
- › Improved tread volume with high abrasion-resistant compound
- › New regrooving indicators
- Benefit: longer tire life leads to long-term cost reduction
- › Staggered siping technology with reduced noise intensity and optimized noise frequency
- Benefit: quieter running and increased ride comfort

- › Durable casing for premium retreadability
- › Retreading recommendation according to ContiLifeCycle standards on the sidewall for precise buffing contour
- Benefit: optimal retreadability enabling operational efficiency

Product highlights

Maximum safety



Example: Wider tread width

- › Wider tread width ensuring excellent cornering stability under urban driving conditions
- › High density interlocking sipes for excellent wet grip
- › All weather capability (M+S) with top performance on dry and wet roads

Increased durability

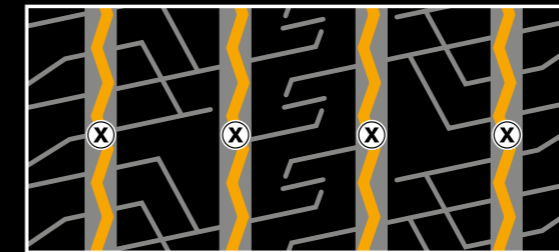


Example: Higher casing wire density

- › Higher casing wire density and thickness for better curbing resistance
- › Increased sidewall thickness for improved protection

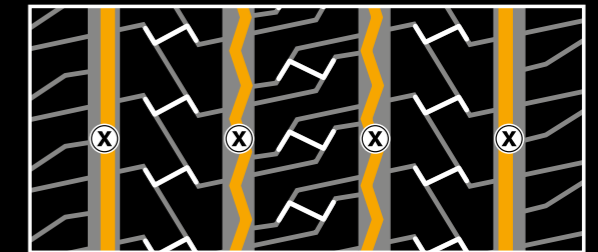
Regrooving recommendations

Conti Urban HA3



Size	Depth (mm)	Width (mm)
275/70 R 22.5	3.0	6-7

Conti Urban HA3 M+S



Size	Depth (mm)	Width (mm)
315/60 R 22.5	3.0	7-8
275/70 R 22.5	3.0	6-7

* In comparison to H5U 1 M+S.