

## Technical data and air pressure recommendations

Tire size	Operating code					EU tire label				Rim		Tire dimensions						Load capacity (kg) per axle at tire pressure <sup>6)</sup> (bar) (psi)					
	Pattern	LI/SI <sup>1)</sup>	PR	M+S	Speed Index and reference speed (km/h)	TT/TL <sup>2)</sup>	D	C	E <sup>3)</sup>	Rim-width	Min. distance between rim centers	Max. standard value in service		Actual value		Stat. radius	Rolling circumference	L <sup>1)</sup>	Tire fitment	8.0 (116)	8.5 (123)	9.0 (131)	9.5 (137)
												Width	Outer-Ø	Width +1%	Outer-Ø ±1%								
205/65 R 17.5	HTR 2	129/127 J (130/130 F)	14		J 100 (F 80)	TL	D	C	E <sup>3)</sup>	6.00	231	213	721	205	711	332	2155	130	S	3455	3630	3800	
												221	213	213	213	213	213	129	S	3365	3530	3700	
245/70 R 17.5	HTL 2	143/141 L (146/146 F)	18		L 120 (F 80)	TL	C	C	E <sup>3)</sup>	6.75	270	250	803	240	789	360	2390	146	S	5225	5485	5745	6000
												258	248	248	248	248	248	143	S	4955	5205	5450	
215/75 R 17.5	HTL 2	135/133 L	18		L 120	TL	C	C	E <sup>3)</sup>	6.00	239	220	779	212	767	359	2340	135	S	4150	4360		
												228	228	220	220	220	220	133	S	37845	38240		
235/75 R 17.5	HTR 2	143/141 K	16		K 110	TL	D	C	E <sup>3)</sup>	6.75	262	242	811	233	797	373	2430	143	S	4955	5205	5450	
												250	241	241	241	241	241	141	S	9370	9835	10300	

Data acc. to DIN 7805/4, WdK-Guidelines 134/2, 142/2, 143/14, 143/25  
 1) Load index single/dual wheel fitment and speed symbol  
 2) TT = Tube Type, TL = Tubeless  
 3) Fuel efficiency  
 4) Wet grip  
 5) External rolling noise (db)  
 6) For tire pressures of 8.0 bar (116 psi) or greater, use valve slit cover plate

**Continental**  
The Future in Motion

6A2DK.en 2015.03  
 Continental Reifen Deutschland GmbH  
 Büttnerstraße 25  
 30165 Hannover  
 Germany

www.continental-truck-tires.com  
 www.continental-corporation.com



**Continental**  
The Future in Motion

Goods

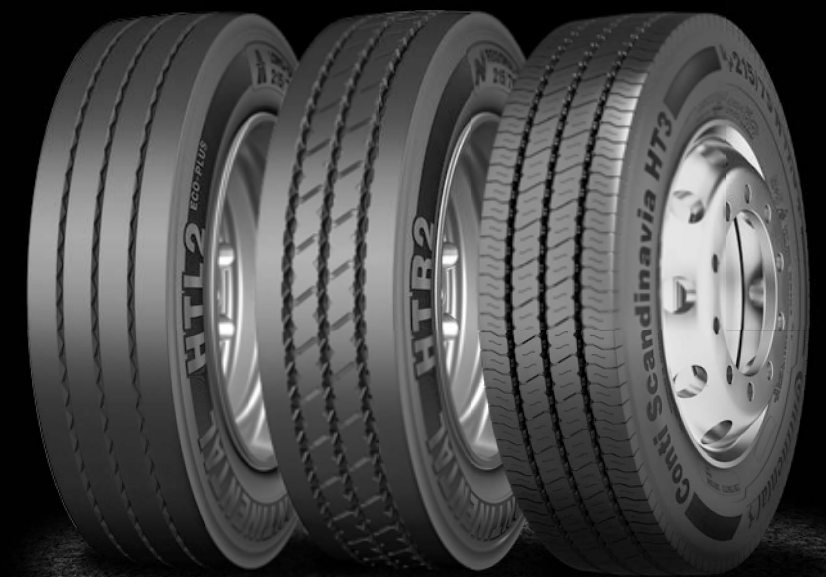


**A heavy load, a long haul.  
 An easy job for our tyres.  
 Low platform tyres.**

### HTL 2 / HTR 2

- › Low platform tyres for maximum load volume
- › Extra load carrying capability
- › Low rolling resistance for lower fuel consumption

- NEW** Conti Scandinavia HT3
- › Safe volume transportation in harsh winter conditions



HTL 2

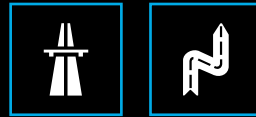
HTR 2

Conti Scandinavia HT3



# For the highest standards on the road.

And for keeping costs down.



## HTL 2 / HTR 2

When heavy, bulky goods need to be transported, the HTR 2 and HTL 2 low platform tyres are really in their element. The HTR 2 is optimal for heavy loads such as excavators, ships or bridge sections. The HTL 2 was developed especially for high-volume transport on motorways, e.g. the delivery of car components using low loaders. The low height of both tyres makes loading the trailer very easy and guarantees maximum load volume. The low rolling resistance ensures lower fuel consumption. Through the Goods casing and a specialised tread, the HTL 2 and HTR 2 ensure you're getting the lowest overall driving costs, even when carrying heavy loads.

### Product highlights



› The HTL 2 was specially designed for high-volume transport on motorways. In spite of the high loads it has to carry, it guarantees low rolling resistance and high mileage performance.

#### Mileage:

- › Narrow grooves
- › High tread volume (tread width and depth)
- › Wide shoulder area for withstanding lateral forces

#### Fuel savings:

- › Intelligent interaction between the casing and tread design for light running
- › Special tread design and compound for optimized rolling resistance
- › Wide and firm shoulder area for less tire deformation

#### Retreadability:

- › Premium retreadability based on Continental Goods casing with new layout, triangular belt, air-keep inner liner, steel cord chafer

### HTR 2



› The HTR 2 is ideal for heavy goods transportation on country roads. Despite heavy loads, the casing and tread design provide high mileage performance and optimum fuel savings.

#### Mileage:

- › Rib design with narrow grooves
- › Wide shoulder area for withstanding lateral forces
- › Special grooves ensure quiet running and avoidance of stone trapping
- › Robust tread compound for abrasion resistance

#### Fuel savings:

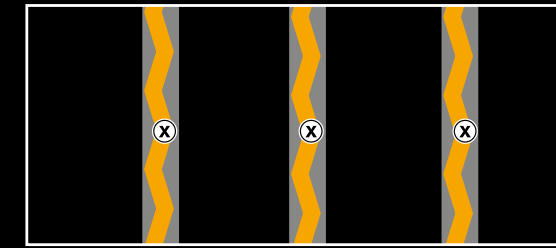
- › Balanced tread design for optimized rolling resistance
- › Balanced interaction between the casing and tread for higher fuel savings

#### Retreadability:

- › Premium retreadability based on Continental Goods casing with new layout, triangular belt, air-keep inner liner, steel cord chafer

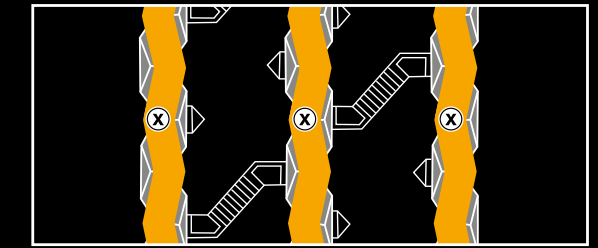
## Regrooving recommendations

### HTL 2



Size	Depth (mm)	Width (mm)
245/70 R 17.5	2.5	8
215/75 R 17.5	2.5	8
235/75 R 17.5	2.0	8

### HTR 2



Size	Depth (mm)	Width (mm)
205/65 R 17.5	2.5	7-10
215/75 R 17.5	2.5	7-10
235/75 R 17.5	2.5	7-10

## NEW Conti Scandinavia HT3

Severe winter conditions can not stop the Conti Scandinavia HT3 from safely delivering bulky and heavy loads to their destinations.

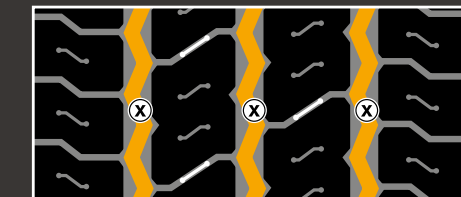


### Product highlights

- › Dedicated winter compound for excellent grip under harsh winter conditions
- › High density of lateral grooves and sipes (pocket sipes) for improved curving and breaking stability, providing excellent grip
- › Wide and open shoulders to withstand strong lateral forces
- › Groove design for minimized stone retention and advanced stone rejection
- › New sidewall compound for optimized rolling resistance

### Regrooving recommendations

#### Conti Scandinavia HT3



Size	Depth (mm)	Width (mm)
245/70 R 17.5	2.5	6
215/75 R 17.5	2.5	6
235/75 R 17.5	2.5	6

