

Size	Pattern	Depth (mm)	Width (mm)	Picture
205/65 R 17.5	HTR 2	2.5	7-10	58
245/70 R 17.5	HTR 2	2.5	8	25
	Conti Hybrid LS3	2.0	5	60
	Conti Hybrid LD3	2.0	5	71
	HTR 2	2.5	7-10	58
	LSR 1*	2.0	9-11	43
	LDR 1+	2.0	A-9-11 B-5-7	51
	LDR 1	2.0	A-9-11 B-5-7	51
	Conti Scandinavia HT3	2.5	6	14
265/70 R 17.5	Conti Hybrid LS3	2.5	6	60
	Conti Hybrid LD3	2.5	6	71
	LSR 1*	2.5	9-11	43
	LDR 1+	2.5	A-7-9 B-3-5	52
	LDR 1	2.5	A-7-9 B-3-5	52
205/75 R 17.5	Conti Hybrid LS3	2.5	5	60
	Conti Hybrid LD3	2.5	5	71
	LSR 1*	2.5	9-11	43
	LDR 1+	2.5	A-8-10 B-4-6	51
	LDR 1	2.5	A-8-10 B-4-6	51
215/75 R 17.5	HTR 2	2.5	8	25
	Conti Hybrid LS3	2.5	8	60
	Conti Hybrid LD3	2.5	8	71
	HTR 2	2.5	7-10	58
	LSR 1*	2.5	9-11	43
	LDR 1+	2.5	A-8-10 B-4-6	51
	LDR 1	2.5	A-8-10 B-4-6	51
225/75 R 17.5	HTR 2	2.5	8	25
	Conti Hybrid LS3	2.5	6	60
	Conti Hybrid LD3	2.5	6	71
	LSR 1*	2.5	9-11	43
	LDR 1+	2.5	A-8-10 B-4-6	51
	LDR 1	2.5	A-8-10 B-4-6	51
235/75 R 17.5	HTR 2	2.5	8	25
	Conti Hybrid LS3	2.5	6	60
	Conti Hybrid LD3	2.5	6	71
	HTR 2	2.5	7-10	58
	LSR 1*	2.5	9-11	43
	LDR 1+	2.5	A-9-11 B-5-7	51
	LDR 1	2.5	A-9-11 B-5-7	51
	Conti Scandinavia LS3	2.5	5	56
	Conti Scandinavia LD3	2.5	6	35
	Conti Scandinavia HT3	2.5	6	14
245/75 R 17.5	LSR	2.5	7-8	66
	LDR	2.5	7-8	68
8 R 17.5	LSR	2.0	7	67
	LDR	2.0	7	63
8.5 R 17.5	LSR 1*	2.0	7-8	38
	LDR 1+	2.0	A-11 B-5-7	51
	LSR	2.0	7	67
	LDR	2.0	7	63
9.5 R 17.5	LDR 1	2.5	A-11 B-5-7	51
	LDR	2.0	7	67
10 R 17.5	LDR 1	2.5	A-11 B-5-7	51
445/45 R 19.5	HTR 1	3.0	13	29
	HTR 1 ContiRe	3.0	13	29
	Conti Hybrid HT3	2.5	A-8 B-6	73
	HTW 2 SCAN	2.0	A-11 B-8	76
435/50 R 19.5	Conti Hybrid HT3	2.5	A-8 B-6	73
385/55 R 19.5	Conti EcoPlus HT3	2.5	A-8 B-6	23
245/70 R 19.5	HTR 1	3.0	13	30
	Conti Hybrid HD3	3.0	5	59
	Conti Hybrid HT3	3.0	A-9 B-7	53
	HSR 1	3.0	9-11	38
	HTR 1	3.0	8-10	62
	HDR	3.0	A-7-9 B-3-5	52
265/70 R 19.5	Conti Hybrid HS3	3.0	8	31
	Conti Hybrid HD3	3.0	5	59
	Conti Hybrid HT3	3.0	A-9 B-7	53
	HSR 1	3.0	9-11	38
	HTR 1	3.0	8-10	62
	HDR*	2.5	A-7-9 B-3-5	52

Size	Pattern	Depth (mm)	Width (mm)	Picture
265/70 R 19.5	Conti Scandinavia HS3	3.0	7	56
	Conti Scandinavia HD3	3.0	6	42
	Conti Scandinavia HT3	3.0	6	21
	HTW	3.5	A-10-12 B-10	48
	Conti Urban HA3 M+S	3.0	6	27
285/70 R 19.5	Conti Hybrid HS3	3.0	8	31
	Conti Hybrid HD3	3.0	5	59
	Conti Hybrid HT3	3.0	A-9 B-7	53
	HSR 1	3.5	10-12	38
	HTR 1	3.0	8-10	62
	HDR	3.0	A-7-9 B-3-5	52
	Conti Scandinavia HS3	3.0	7	56
	Conti Scandinavia HD3	3.0	6	42
	Conti Scandinavia HT3	3.0	7	21
305/70 R 19.5	Conti Hybrid HS3	3.0	8	31
	Conti Hybrid HD3	3.0	5	59
	HSR 1	3.0	10-12	38
	HDR	3.0	A-7-9 B-3-5	52
315/45 R 22.5	Conti EcoPlus HD3	2.5	A-7 B-5	16
355/50 R 22.5	Conti EcoPlus HS3	2.5	A-10 B-8	1
	HSR 2*	2.5	A-16 B-12	4
295/55 R 22.5	Conti EcoPlus HD3	3.0	A-8 B-5	15
	HDL 2*	3.0	8	17
385/55 R 22.5	Conti EcoPlus HS3	3.0	A-10 B-8	1
	Conti EcoPlus HT3	2.5	6	23
	HSL 2*	3.0	A-16 B-12	4
	HTR 1*	3.5	13	30
	Conti Hybrid HS3	3.0	A-10 B-8	32
	Conti Hybrid HT3	3.0	A-10 B-7	53
	HSR 2*	3.0	10-12	37
	HTR 2*	3.5	10-12	57
	HSR 1	3.0	10-12	39
	HTR 1*	3.5	10-12	61
	HSW 2 SCAN	3.0	10-12	49
	HTW 2 SCAN	3.0	10	7
	HDL 1	3.5	10-12	47
	HDC	3.5	10-12	72
295/60 R 22.5	Conti EcoPlus HS3	3.5	A-8 B-4	2
	Conti EcoPlus HD3	2.5	A-7 B-5	15
	HSL 2*	3.5	A-16 B-12	4
	HDL 2*	3.0	8	17
	HDL 2	3.0	8	17
	Conti Hybrid HD3	3.0	A-7 B-6	45
	HD Hybrid*	3.0	A-6 B-10	22
	HSR 1	2.5	10-12	39
315/60 R 22.5	HSW 2 SCAN	3.5	6	28
	Conti EcoPlus HS3	4.0	A-8 B-4	2
	Conti EcoPlus HD3	4.0	A-8 B-5	15
	HSL 2*	3.5	A-16 B-12	4
	HDL 2*	3.0	8	17
	HDL 2	3.0	8	17
	Conti Hybrid HD3	3.0	A-7 B-6	45
	HD Hybrid*	3.0	A-6 B-10	18
	HDR 2	4.0	6	28
	HSL 2*	3.0	A-16 B-12	4
	HDL 2*	3.0	12	24
	HDL 2	3.0	A-10 B-8	32
	Conti Hybrid HT3	2.5	A-10 B-8	53
	HSR 2	3.0	10-12	37
	HTR 2*	3.0	11	57
	HSR 1	3.5	10-12	39
	HSW 2 SCAN	3.5	10-12	49
	HTW 2 SCAN	3.0	10	7
	HSC 1	3.5	12	26
	HDC	3.5	10-12	11
425/65 R 22.5	HTR 2	3.0	13	57
445/65 R 22.5	HTR 2	3.5	13	57
255/70 R 22.5	HSR 1	3.0	8	38
	HDR	2.0	A-10-12 B-5-7	51
275/70 R 22.5	Conti Hybrid HS3	3.0	8	31
	Conti Hybrid HD3	3.0	A-7 B-6	45
	HSR 1	2.5	10-12	38

Size	Pattern	Depth (mm)	Width (mm)	Picture
275/70 R 22.5	HDR	3.0	A-7-9 B-3-5	52
	HDW 2 SCAN	3.0	6	28
	Conti Urban HA3	3.0	6-7	41
	Conti Urban HA3 M+S	3.0	6-7	27
	HSU 1	3.0	10-12	33
	HSU 1 M+S	3.0	8	13
	Conti Hybrid HD3	3.0	10-12	33
	HSU 1 M+S ContiRe	3.0	8	13
	HDL*	5.0	A-8-10 B-4-6	40
	Conti UrbanScan HA3	3.0	7-8	20
	Conti UrbanScan HD3	3.5	6-7	6
305/70 R 22.5	HSR 1	3.5	10-12	38
	HDR	4.0	A-7-9 B-3-5	52
	Conti Urban HA3 M+S	2.5	7-8	77
	HSU 1	4.0	10-12	33
315/70 R 22.5	Conti EcoPlus HS3	2.5	A-10 B-8	3
	Conti EcoPlus HD3	2.5	A-8 B-5	15
	HSL 2*	3.0	A-16 B-12	4
	HDL 2*	3.0	8	17
	HDL 2	3.0	8	17
	Conti Hybrid HS3	2.5	9	31
	Conti Hybrid HD3	3.0	A-7 B-6	45
	HDR 2*	2.0	6-7	46
	HSR 2	2.5	10	36
	HD Hybrid*	2.0	A-6 B-10	18
	HDR 2	2.0	6-7	46
	HSR 1	3.0	10-12	38
	HDR*	3.5	A-7-9 B-3-5	52
	HSW 2 SCAN	2.5	6	28
	HDW 2 SCAN*	3.0	6	28
295/80 R 22.5	HSL 2*	3.0	A-16 B-12	4
	Conti Hybrid HS3	3.0	8	31
	Conti Hybrid HD3	3.0	A-7 B-6	45
	HDR 2*	3.0	6-7	46
	HSR 2	3.0	10	36
	HD Hybrid*	3.0	A-6 B-10	22
	HDR 2	3.0	6-7	50
	HSR 1	2.5	10-12	38
	HDR*	4.0	A-7-9 B-3-5	52
	ContiRe	4.0	A-7-9 B-3-5	52
	ContiRe CityService HA3	3.0	A-9 B-11	74
	ContiRe CityService HD3	3.0	A-10 B-5-6	75
	HSW 2 SCAN	3.0	8	54
	Conti Coach HA3	3.5	6-7	9
	Conti Coach HA3 ED	4.0	6-7	9
	Conti Coach HA3 AC	2.5	6-7	9
	Conti CityPlus HA3	3.5	7-8	64
	HSW 2 Coach*	3.0	10	55
	HSC 1	3.5	12	26
	HSC 1 ED	3.5	12	26
	HDC 1	3.5	A-12 B-7	44
	HDC 1 ED	3.5	A-12 B-7	69
	Conti EcoPlus HS3	3.0	A-10 B-8	3
	Conti EcoPlus HD3	3.0	A-8 B-5	15
	HSL 2*	3.5	A-16 B-12	4
	HDL 2*	3.5	8	17
	HDL 2	3.5	8	17
	Conti Hybrid HS3	3.5	9	31
	Conti Hybrid HD3	3.0	A-7 B-6	45
	HDR 2*	2.0	6-7	50
	HSR 2	3.5	10	36
	HD Hybrid*	3.0	A-6 B-10	22
	HDR 2	3.5	6-7	4
	HSR 1	3.0	10-12	38
	HSR 1*	3.0	10-12	38
	HDR*	4.0	A-7-9 B-3-5	52
	HDR	4.0	A-7-9 B-3-5	52
	ContiRe CityService HA3	3.0	A-9 B-11	74
	ContiRe CityService HD3	2.5	A-10 B-5-6	75
	HSW 2 SCAN	3.5	8	54
	HDW 2 SCAN*	3.5	6-7	28
	Conti Coach HA3	3.0	6-7	9
	HSW 2 Coach	3.5	10	55
	HSC 1	3.0	12	26

Size	Pattern	Depth (mm)	Width (mm)	Picture
315/80 R 22.5	HSC 1 ED	3.0	12	26
	HSC 1 ContiRe	3.0	12	26
	HDC 1	3.5	A-12 B-7	44
	HDC 1 ED	3.5	A-12 B-7	69
	HDO	3.5	10-12	10
9 R 22.5	HSR	3.0	A-10-12 B-4-5	65
10 R 22.5	HSR	3.5	A-10-12 B-4-5	65
11 R 22.5	HSR	3.0	A-10-12 B-4-5	65
	HDR	3.5	A-10-12 B-5-7	70
	HSU 1	2.5	10-12	33
	HSC 1	3.5	12	19
	HSC 1 ED	3.5	12	19
12 R 22.5	Conti Hybrid HS3	3.0	8	31
	HSR 1	3.5	10-12	38
	HSR	3.5	A-10-12 B-4-5	65
	HDR	4.0	A-10-12 B-5-7	70
	Conti CityPlus HA3	3.5	7-8	64
	HSC 1	3.5	12	19
	HSC 1 ED	3.5	12	19
	HDC 1 ED	3.5	A-12 B-7	69
	HSC	3.5	10-12	12
13 R 22.5	HSR	2.5	A-10-12 B-4-5	65
	HSC 1	3.5	12	19
	HSC 1 ED	3.5	12	19
	HDC 1	3.5	A-12 B-7	69
	HDC 1 ED	3.5	A-12 B-7	69
	HSO	3.0	8	5
	HDO	4.0	10-12	10

* also as ContiRe

All Continental tires on which regrooving is permitted have on both sidewalls, in accordance with ECE regulation 54, the word **REGROOVABLE**.

The additional tread depth of up to 4 mm gained by regrooving means a significant increase in performance.

As part of their design all-steel truck tires have a so-called tread stock between the upper edge of the belt and the tread grooves. This tread stock is intended to prevent stones etc. penetrating into the steel belt and the casing.

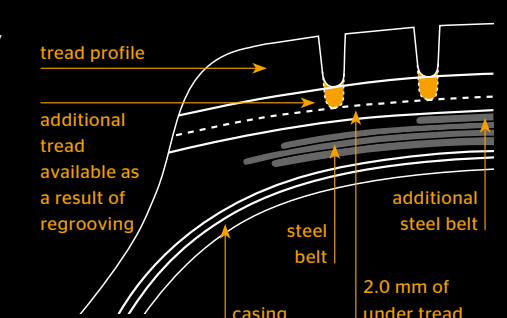
Provided it is marked "REGROOVABLE", a commercial vehicle tire may be regrooved down to a residual under-tread thickness of 2 mm above the breaker or belt. All additional regulations of the respective country have to be met.

Although tires can be retreaded after reaching the legal wear limit, regrooving is not advisable in every case. The tread stock thickness is reduced and stones etc. can more easily penetrate and damage the steel belts, leading to rust formation. This has decidedly negative effect on the tire's suitability for remoulding.

The best time for regrooving is when the tread is worn down to about 3 mm. The tire must then be checked to make sure the wear is even all round. Attention should be paid to local or uneven wear patches.

Regrooving should be carried out by an expert in order to avoid premature failure as well as any reduction in the tire's suitability for retreading.

In some countries (e.g. Germany for KOM-100 coaches and Austria for coaches) regrooving of front axle tires for coaches is prohibited. In general regrooving on front axle coach tires is not recommended.



6FD53.en 2015.09

Tread depth measuring points (§ 36 min. tread depth)

All information given is subject to change. This table does not contain all of Continental's regrooving recommendations. For further information please consult the technical data book provided by Continental or contact customer support. We will be happy to assist you.

www.continental-truck-tires.com

www.continental-corporation.com